



कार्यालय प्राचार्य, शासकीय कमलाराजा कन्या स्नातकोत्तर स्वशासी महाविद्यालय, ग्वालियर  
**GOVT. KAMLA RAJA GIRLS P.G. AUTO. COLLEGE, GWALIOR (M.P.) INDIA**  
(Affiliated to Jiwaji University, Gwalior under 2(f) & 12(b) NAAC – 'A' Grade Accredited Institute)  
[www.krgcgwalior.org](http://www.krgcgwalior.org) [krgc@rediffmail.com](mailto:krgc@rediffmail.com) Phone: 0751- 2625495, 0751-2438173

# Annual Report of 2018-19



## Table of Contents

Principal's Report.....	3
Our Major New Initiatives .....	5
Overview .....	8
Courses Offered .....	9
Scholars registered in Research Centers .....	17
Areas of focus .....	17
Admission of UG and PG Students .....	20
Facilities and Services available in Central Library.....	26
Scholarships Schemes .....	29
Research scholarship/ award .....	32
Cultural Activities.....	33
Awards and Achievements .....	35
Extension Activities.....	36
Plantation Program .....	40
Social Welfare Activities.....	40
Major research Themes.....	47
Publication in National and International Journals/ Anthology .....	50
Participation in workshops/ Seminars/ conferences (national/ international) .....	68
Human Resources .....	101
Placement Cell:.....	103
Examination Cell: .....	107
Ph.D Awarded .....	115
Paper Published in Journals .....	118



### **Annual Report 2018-19**

This format outlines the annual reports to be published by all colleges participating in the Madhya Pradesh Higher Education Quality Improvement Project on their websites, by October 31<sup>st</sup> of each year. Part I is intended as a guide and colleges are free to alter the contents and format as they see fit. Part II, the Appendix (Institutional Performance Data and Financial Reports), is mandatory and colleges are required to report all data as per the attached format and instructions.

#### **Part I 1. The Principal's Report (2 pages)**

Highlights the key activities, events, and successes of the past year and briefly describes major new initiatives to be undertaken over the next year.

#### **Principal's Report**

Govt. KRG PG (Autonomous) College is one of the oldest and largest girls' college of the division, imparting higher education to nearly 10,000 girls. We train our students to work hard and excel in all fields. We enable them to explore their individual talent, niche and equip and empower them to grow and rise. The college makes collective efforts to achieve excellence within limited resources.

We have our Indian traditions and culture which is reflected in our curricular and extra-curricular activities. We are always prepared to accept the challenge to “**stand up and stand out**” Our students showcased their talent and abilities in semester results, academics, sports, cultural events and in ISR. Our focus was on hard work and dedication to make our students confident, independent so that they shine in all spheres of life, and our efforts paid off.

**We feel pride in announcing that we achieved 'A' Grade in NAAC visit in last inspection.**

#### **Our Major New Initiatives**



Various key activities, events and successes of ours can be outlined as follows –

- In the beginning of the year, we organized orientation classes to prepare our students for the College and to get them introduced with it.
- Our girls won a number of Gold Medals in Academics.
- Our students participated and received awards in National and International events in sports.
- Our student Adya Dixit represented our Nation in International Youth Festival (Asian Countries) and won gold medal thus making us proud.
- Our College is proud for its representation in Republic day Parade almost every year through its Conduction of competitive examination and Nursing examination
- Clean Campus-Green Campus drive and Plantation
- Voter Awareness drive – SVEEP (Systematic Voters Education and Electoral Participation)
- To enhance ISR
- Guest Lectures and Extension Lectures
- To organize coaching programs for competitive examination and banking test
- Many of our NCC cadets were selected for several activities such as Youth Exchange Program, National Integrity Camp, Army Camp, Rock Climbing Camp etc.
- We preserve Cultural /Moral values of our students through different Clubs.
- We started Vocational Short Term Certificate Courses to enhance skill of our students.
- Placement Cell of our College is successfully preparing our students to be Entrepreneurs and giving employment to others.
- This cell organized numerous training programs and prepared students to 'Earn while you Learn' as well as to get placements in Industries, Banking sector etc.
- We have fifteen research centres in the College actively engaged in quality research.
- Our faculty members are publishing books /chapters, research papers in National /International journals.





- We are organizing Inter departmental/ Inter College/ Inter State Sharing Programs, Conferences /Seminars /workshops etc. for students as well as for teaching staff.
- Our faculty members are also a part of Conferences /Seminars /workshops etc. organized by others.
- Many of our faculty members are honoured by National / International Awards almost every year.
- Faculty members are frequently invited as Subject Expert /Resource Person in Seminars /Conferences
- We run Cleanliness Drive in Collaboration with NCC and NSS in the College.
- We have started Paperless Correspondence in Campus and some of the notice boards are replaced by Electronic Notice Boards.
- Water Harvesting Started in the Campus.
- Student Help Centre and Canteen have been renovated..
- National and International recognition is achieved by the faculty members in the form of Research Awards

### **Our Major New Initiatives**

1. The College has planned to start new short term vocational certificate courses in 2018-2019 in addition to those running in the previous year. For the wide choice of courses the College has prepared a pool of different certificate courses and will start those ones in which students are showing their keen interest.
2. Barcoding of trees will be done to maintain and preserve campus flora and spread awareness about diversity of the plants in the campus among the students and staff.
3. The College is going to start a new coaching program 'UDAAN' to help and guide our students to prepare for Competitive Examinations.
4. Existing facilities and infrastructure are not sufficient to satisfy increasing demands so the College is planning to increase and upgrade its existing facilities and infrastructure in



the session 2018-2019. Three more smart class rooms, Virtual class rooms, Language Lab, Library equipped with Audio Video System and digitalized etc. will be established in this session.

5. As per demand of time Faculty members and officials are required to upgrade them. Therefore the College itself will conduct Faculty Development Program, Training Programs, and Workshops etc. for teaching as well as nonteaching members in batches in 2018-2019. Members will also be encouraged to sharpen them joining such programs outside and the College may support them.
6. Contribution of teachers to NGO/Educational Societies/Research Institutions and Collaboration with Academic/Research Institutions
7. Collaboration with other prestigious institutes through MoU with Academic/Research Institutions to achieve academic excellence
8. We wish to give exposure and equal weightage to our students so we are planning to nominate Brand Ambassadors in different categories in this session to serve and pay attention in a better way and to have our students' cooperation in various activities.
9. We shall provide Counselling and Guidance not only for academics but also to enrich their knowledge in various fields such as financial awareness, social and psychological security, legal rights, placement opportunities etc.
10. To make our students skilled and competent we have to run special programs /trainings /coaching regarding better and effective communication, net friendly, preparation for competitive examinations, basic knowledge for self-employment etc. Job oriented and skill based course like Food Processing, Small Scale Industries, Handicrafts, Rural Resource Management, Courses for Targeted groups etc. are to be started.
11. To provide students placement opportunities, career fair and campus placement activities will be held. To enhance placement, linkages with Industries, Banks and employment giving agencies will be set up.
12. In 2018-2019 the College will again ensure the availability of support system such as wheel chairs, E- notice board (Brail) etc. to those who need it.



13. Sanction of Research Center in Urdu department
14. Publication of Research Papers, Chapters in Books

Articles in Books

15. Publication of Books/Anthologies/Proceedings
16. Orientation program of NAAC for Gwalior-Chambal division
17. Every institution is recognized by its research work, publications, journals, patents etc. We already have fifteen of our departments recognized research centres and efforts will be made to establish three more departments i.e. Botany, Mathematics and Urdu as research centres in this session. To facilitate our researchers, a well-equipped multi-disciplinary Central Instrumentation Laboratory will be established in 2018-2019. We are already publishing multi-disciplinary International Journal '*Creative Discourse*'. Incentives to quality and need based Research & Publication are to be granted for encouragement.
18. For socio economic growth of girls /women, a Women Study Centre is planned to be established where rural women empowerment, Counselling and Guidance for awareness programs on government schemes, psychological, social counselling, different trainings related to women empowerment etc. will be held. ICT based trainings will also be provided
19. To maintain green and eco friendly campus activities like Environmental impact assessment,
20. Environmental Audit will be done. Alumni association will be strengthen.
21. To develop the sense of responsibility towards society in our girls, to help people from nearby villages, program **DARPAN** will be launched in which village **Barai** near Gwalior will be adopted where Orientation /Training programs will be held for ICT awareness, financial schemes, rural development schemes, Causes and Cures of malnutrition in Children, empowering women with ICT etc
22. For internal administration of the College installation of M.I.S. Software is in the process.



23. Some departments, science block, academic cell, placement cell etc. will be extended, medicinal herbal garden will be developed and sport infrastructure will also be extended. Renovation work will also be done in some departments
24. A separate building for Law studies is in progress which will be completed in this year.

### Overview

Briefly introduces the college, **its history and mission, courses offered, areas of focus** etc

### History

Founded in 1937, Govt. Kamla Raja Girls Post Graduate Autonomous College, Gwalior, is a pioneer and premier institution for women in higher education in this part of country. It was elevated to the post graduate level in 1970 and autonomous status was conferred on it in 1995. Standing with majestic grace in the heart of the city, the College is housed in one of the palaces of the erstwhile Scindhia dynasty. It has an impressive historic main building, Saraswati Mahal alternated by lush green lawns, tall trees and blocks of various faculties constructed lately. It is a unique College of old and new architecture as well as picturesque natural beauty spread over a vast campus of 53714.60 sq. m.

National Assessment & Accreditation council, Bangalore (NAAC) has accredited this college as B level (equivalent to previous \* \* \* \* grade) among autonomous colleges in 2002. During reaccreditation process by NAAC in 2010, college has accredited by B grade. In the third cycle of NAAC reaccreditation, college has been upgraded as A grade College in 2016.

### Mission

**To provide value education for academic enhancement of girls for sustainable society**

- To translate our vision into action plans.
- We are committed to provide excellent educational infrastructure and academic ambience conducive for higher learning for girls.



- To promote all round development of girls through fostering knowledge and skill, making them aware of values of equality, social justice, secularism, patriotism, co-operation and peaceful coexistence to assimilate best traditions and culture and transforming young girls into multifaceted women and global citizen.
- Our mission is dynamic and its tasks are well defined which make the Institution characteristic not only in this region, state but all over the nation.
- According to our vision and mission, academic programs and activities are decided. First these are communicated to the stakeholders.

#### Courses Offered

Stream	Course	Optional Subjects
Arts	B. A.	(Dance – Hindi – History)
	B. A.	(Dance – Hindi – Political Science)
	B. A.	(Drawing and Painting – Economics – English)
	B. A.	(Drawing and Painting – Economics – Hindi)
	B. A.	(Drawing and Painting – Economics – Home Science)
	B. A.	(Drawing and Painting – Economics – Psychology)
	B. A.	(Drawing and Painting – English – History)
	B. A.	(Drawing and Painting – English – Psychology)
	B. A.	(Drawing and Painting – Hindi – History)
	B. A.	(Drawing and Painting – Hindi – Sociology)
	B. A.	(Drawing and Painting – History – Psychology)



B. A.	(Drawing and Painting – History – Sociology)
B. A.	(Economics – English – Geography)
B. A.	(Economics – English – Mathematics)
B. A.	(Economics – English – Philosophy)
B. A.	(Economics – English – Political Science)
B. A.	(Economics – English – Psychology)
B. A.	(Economics – English – Sociology)
B. A.	(Economics – Geography – Hindi)
B. A.	(Economics – Geography – History)
B. A.	(Economics – Geography – Psychology)
B. A.	(Economics – Geography – Sanskrit)
B. A.	(Economics – Geography – Sociology)
B. A.	(Economics – Hindi – Home Science)
B. A.	(Economics – Hindi – Music)
B. A.	(Economics – Hindi – Political Science)
B. A.	(Economics – Hindi – Psychology)
B. A.	(Economics – Hindi – Sociology)
B. A.	(Economics – Home Science – Political Science)



कार्यालय प्राचार्य, शासकीय कमलाराजा कन्या स्नातकोत्तर स्वशासी महाविद्यालय, ग्वालियर  
**GOVT. KAMLA RAJA GIRLS P.G. AUTO. COLLEGE, GWALIOR (M.P.) INDIA**  
(Affiliated to Jiwaji University, Gwalior under 2(f) & 12(b) NAAC – 'A' Grade Accredited Institute)  
[www.krgcgwalior.org](http://www.krgcgwalior.org) [krgc@rediffmail.com](mailto:krgc@rediffmail.com) Phone: 0751- 2625495, 0751-2438173

B. A.	(Economics – Music – Sociology)
B. A.	(Economics – Political Science – Psychology)
B. A.	(Economics – Political Science – Sociology)
B. A.	(English – Geography – History)
B. A.	(English – Geography – Philosophy)
B. A.	(English – Geography – Psychology)
B. A.	(English – Geography – Sociology)
B. A.	(English – History – Home Science)
B. A.	(English – History – Political Science)
B. A.	(English – History – Psychology)
B. A.	(English – History – Sociology)
B. A.	(English – Home Science – Political Science)
B. A.	(English – Philosophy – Sociology)
B. A.	(Functional Hindi – History – Sociology)
B. A.	(Functional Hindi – History – Political Science)
B. A.	(Functional Hindi – Music – Sociology)
B. A.	(Functional Hindi – Political Science – Sociology)
B. A.	(Geography – Hindi – History)



कार्यालय प्राचार्य, शासकीय कमलाराजा कन्या स्नातकोत्तर स्वशासी महाविद्यालय, ग्वालियर  
**GOVT. KAMLA RAJA GIRLS P.G. AUTO. COLLEGE, GWALIOR (M.P.) INDIA**  
(Affiliated to Jiwaji University, Gwalior under 2(f) & 12(b) NAAC – 'A' Grade Accredited Institute)  
[www.krgcgwalior.org](http://www.krgcgwalior.org) [krgc@rediffmail.com](mailto:krgc@rediffmail.com) Phone: 0751- 2625495, 0751-2438173

B. A.	(Geography – Hindi – Home Science)
B. A.	(Geography – Hindi – Philosophy)
B. A.	(Geography – Hindi – Psychology)
B. A.	(Geography – Hindi – Sociology)
B. A.	(Geography – Philosophy – Sanskrit)
B. A.	(Geography – Sanskrit – Sociology)
B. A.	(Geography – Sociology – Urdu)
B. A.	(Hindi – Drawing and Painting – Psychology)
B. A.	(Hindi – History – Home Science)
B. A.	(Hindi – History – Mathematics)
B. A.	(Hindi – History – Political Science)
B. A.	(Hindi – History – Psychology)
B. A.	(Hindi – Home Science – Music)
B. A.	(Hindi – Home Science – Political Science)
B. A.	(Hindi – Music – Sociology)
B. A.	(Hindi – Philosophy – Political Science)
B. A.	(Hindi – Philosophy – Sociology)
B. A.	(Hindi – Political Science – Sociology)





कार्यालय प्राचार्य, शासकीय कमलाराजा कन्या स्नातकोत्तर स्वशासी महाविद्यालय, ग्वालियर  
**GOVT. KAMLA RAJA GIRLS P.G. AUTO. COLLEGE, GWALIOR (M.P.) INDIA**  
(Affiliated to Jiwaji University, Gwalior under 2(f) & 12(b) NAAC – 'A' Grade Accredited Institute)  
[www.krgcgwalior.org](http://www.krgcgwalior.org) [krgc@rediffmail.com](mailto:krgc@rediffmail.com) Phone: 0751- 2625495, 0751-2438173

B. A.	(Hindi – Sanskrit – Sociology)
B. A.	(History – English – Music)
B. A.	(History – Geography – Psychology)
B. A.	(History – Geography – Sanskrit)
B. A.	(History – Home Science – Geography)
B. A.	(HISTORY – HOME SCIENCE – POLITICAL SCIENCE)
B. A.	(History – Home Science – Sanskrit)
B. A.	(History – Home Science – Sociology)
B. A.	(History – Mathematics – Sociology)
B. A.	(History – Music – Psychology)
B. A.	(History – Music – Sociology)
B. A.	(History – Philosophy – Sociology)
B. A.	(History – Political Science – Psychology)
B. A.	(History – Political Science – Sanskrit)
B. A.	(History – Political Science – Sociology)
B. A.	(History – Political Science – Urdu)
B. A.	(History – Psychology – Sanskrit)
B. A.	(History – Psychology – Sociology)



**कार्यालय प्राचार्य, शासकीय कमलाराजा कन्या स्नातकोत्तर स्वशासी महाविद्यालय, ग्वालियर**  
**GOVT. KAMLA RAJA GIRLS P.G. AUTO. COLLEGE, GWALIOR (M.P.) INDIA**  
*(Affiliated to Jiwaji University, Gwalior under 2(f) & 12(b) NAAC – 'A' Grade Accredited Institute)*  
**www.krgcgwalior.org krgc@rediffmail.com Phone: 0751- 2625495, 0751-2438173**

	B. A.	(History – Sanskrit – Sociology)
	B. A.	(History – Sociology – Urdu)
	B. A.	(History-Urdu- Psychology)
	B. A.	(Music – Philosophy – Psychology)
	B. A.	(Music – Political Science – Sociology)
	B. A.	(Political Science – Psychology – Sociology)
	B. A.	(Political Science – Sanskrit – Sociology)
	B. A.	(Political Science – Sociology – Urdu)
<b>Management</b>	B. B. A.	BBA
<b>Computer Science</b>	B. C. A.	BCA
<b>Commerce</b>	B. Com	Commerce
	B. Com	Commerce with Computer Application
<b>Home Science</b>	B. Sc. In Home Science	Home Science
<b>Science</b>	B. Sc.	Biotechnology – Botany – Chemistry
	B. Sc.	Biotechnology – Chemistry – Zoology
	B. Sc.	Botany – Chemistry – Microbiology
	B. Sc.	Botany – Chemistry – Zoology
	B. Sc.	Chemistry – Industrial Chemistry – Mathematics



	B. Sc.	Chemistry – Industrial Chemistry – Zoology
	B. Sc.	Chemistry – Mathematics – Physics
	B. Sc.	Computer Science – Mathematics – Physics
	B. Sc.	Electronics – Mathematics – Physics
	B. Sc.	Chemistry – Microbiology – Zoology
	B. Sc.	Bioinformatics – Botany – Chemistry
	B. Sc.	Bioinformatics – Chemistry – Zoology
<b>Legal Studies Arts</b>	B.A. L.L.B.	Law with Arts
<b>Arts</b>	M. A.	Drawing & Painting
	M. A.	Economics
	M. A.	English
	M. A.	Geography
	M. A.	Hindi
	M. A.	History
	M. A.	Music Instrument
	M. A.	Music Vocal
	M. A.	Philosophy
	M. A.	Political Science



**कार्यालय प्राचार्य, शासकीय कमलाराजा कन्या स्नातकोत्तर स्वशासी महाविद्यालय, ग्वालियर**  
**GOVT. KAMLA RAJA GIRLS P.G. AUTO. COLLEGE, GWALIOR (M.P.) INDIA**  
*(Affiliated to Jiwaji University, Gwalior under 2(f) & 12(b) NAAC – 'A' Grade Accredited Institute)*  
**www.krgcgwalior.org krgc@rediffmail.com Phone: 0751- 2625495, 0751-2438173**

	M. A.	Sanskrit
	M. A.	Sociology
	M. A.	Urdu
<b>Commerce</b>	M. Com.	Commerce
<b>Science</b>	M. Sc.	Biotechnology
	M. Sc.	Botany
	M. Sc.	Chemistry
	M. Sc.	Mathematics
	M. Sc.	Physics
	M. Sc.	Zoology
<b>Home Science</b>	M. Sc. (Home Science)	Food and Nutrition
	M. Sc. (Home Science)	Family Resource Management
	M. Sc. (Home Science)	Human Development
<b>Special Course</b>	Diploma Course	PGDCA
<b>Short Term Certificate Course</b>	6 Months Certificate Course	Food Technology



### Scholars registered in Research Centers

S.no.	Subject	No. of scholars registered
1	Chemistry	03
2	Commerce	03
3	Drawing & Painting	04
4	English	12
5	Geography	06
6	Hindi	08
7	History	09
8	Home Science	16
9	Music	04
10	Sanskrit	11
11	Sociology	03
12	Zoology	01
<b>Total</b>		<b>80</b>

### Areas of focus-

Our Mission statement is based on sustainable development of our students, institution, society and thus the development of the nation. Our focus is on

**Inclusion :** Open, welcoming, supportive and committed to equity and diversity.

**Excellence:** Quality and excellence in teaching- learning, research ISR and everything we do.



**Sustainability:** We are dedicated to create sustainability in our environment, weather Academic, Cultural, Spiritual Financial or Social.

**To Nurture :** We are responsive to the needs of our stakeholders, we are committed to nurture the development of our staff, students; their Academic, Social, Physical, Emotional, Cultural and Spiritual and Moral wellbeing.

### 3. Senior Management Team and Board of Governors

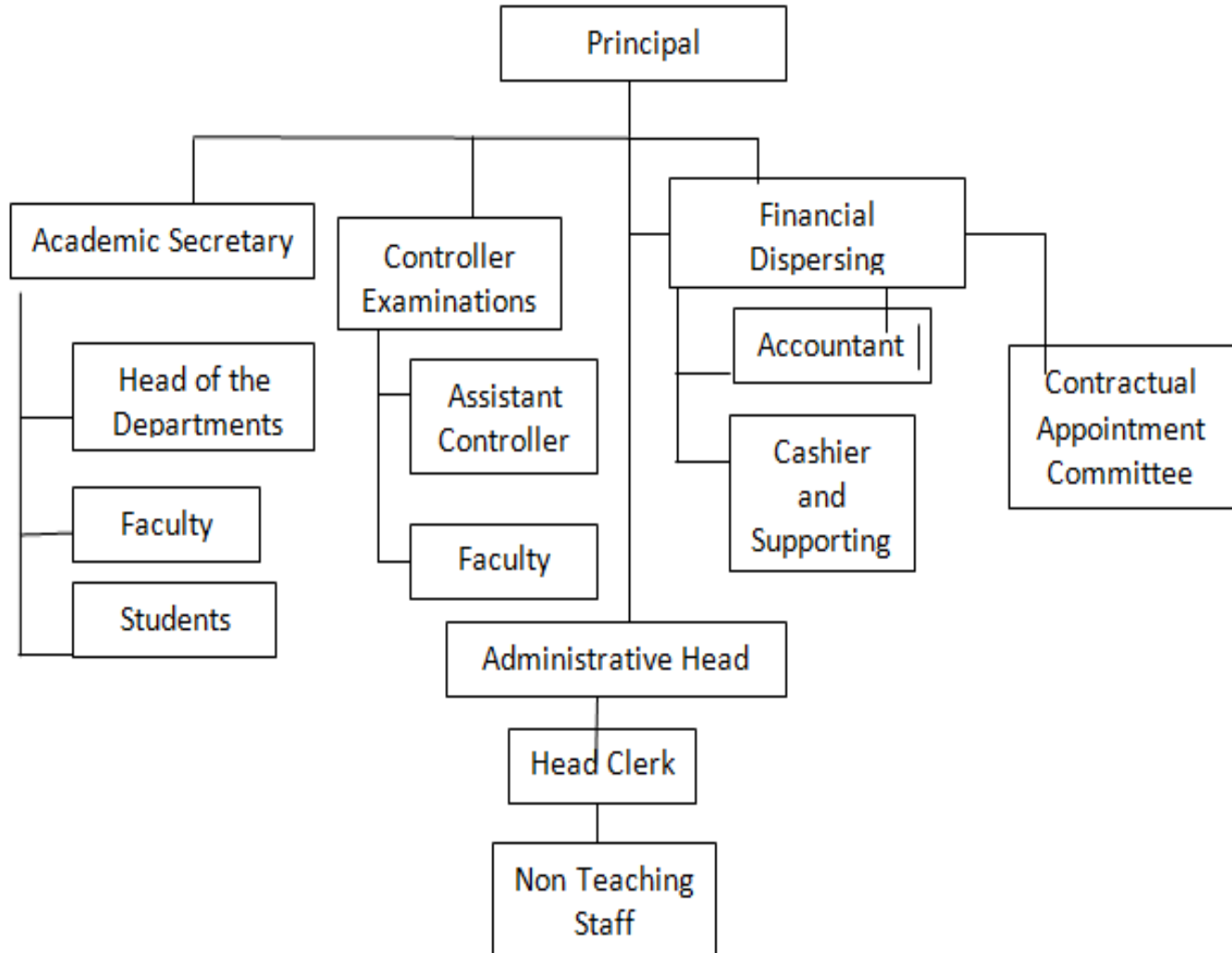
Lists the members of the senior management team (Principal, Registrar, Deans etc.) and members of the Board of Governors including their designations and professional backgrounds.

**Principal : Dr. B.M. Kulshrestha**

**Academic Secretary : Dr Sanjay Swarnkar**



### Administrative Hierarchy





#### 4. Admission Statistics

The number of applicants at the UG and PG level who ranked the college as their 1<sup>st</sup>, 2<sup>nd</sup> and 3<sup>rd</sup> preference, the number of applications received for PhD courses, and the number of students admitted at each level as per the following format. Applications UG, PG PhD

Applications	UG	PG	PGDCA	PhD
Applications that ranked the college as the 1 <sup>st</sup> preference	Data available with deptt of higher edu			NA
Applications that ranked the college as the 2 <sup>nd</sup> preference				
Applications that ranked the college as the 3 <sup>rd</sup> preference				
Total number of applications received				
Number of students admitted	3302	972	19	235

Data Source: E-pravesh portal, records of the affiliating university •

#### Admission of UG and PG Students

A brief demographic profile of students admitted (in terms of gender, caste, whether from MP etc.)

Gender	Name of the Course	Subject	Seats	Gen	OBC	SC	ST	Total	% of studen	% of stude





**कार्यालय प्राचार्य, शासकीय कमलाराजा कन्या स्नातकोत्तर स्वशासी महाविद्यालय, ग्वालियर**  
**GOVT. KAMLA RAJA GIRLS P.G. AUTO. COLLEGE, GWALIOR (M.P.) INDIA**  
 (Affiliated to Jiwaji University, Gwalior under 2(f) & 12(b) NAAC – 'A' Grade Accredited Institute)  
[www.krgcgwalior.org](http://www.krgcgwalior.org) [krgc@rediffmail.com](mailto:krgc@rediffmail.com) Phone: 0751- 2625495, 0751-2438173

Female										ts from the State	nts from other state s
PG											
	M.A.	M . A.	Drawing & Painting		02	00	01	00	03		
		M . A.	Economics		15	14	00	00	29		
		M . A.	English		21	17	06	00	44		
		M . A.	Geography		11	06	07	00	24		
		M . A.	Hindi		18	20	05	00	43		
		M . A.	History		12	26	06	00	44		



	M · A.	Music Instrument		00	00	00	00	00		
	M · A.	Music Vocal		06	01	01	00	08		
	M · A.	Philosophy		00	00	00	00	00		
	M · A.	Political Science		14	16	10	00	40		
	M · A.	Sanskrit		14	10	02	00	26		
	M · A.	Sociology		06	26	06	00	38		
	M · A.	Urdu		00	04	00	00	04		
M.Co m	M · C	Commerce		253	155	37	03	448		



**कार्यालय प्राचार्य, शासकीय कमलाराजा कन्या स्नातकोत्तर स्वशासी महाविद्यालय, ग्वालियर**  
**GOVT. KAMLA RAJA GIRLS P.G. AUTO. COLLEGE, GWALIOR (M.P.) INDIA**

(Affiliated to Jiwaji University, Gwalior under 2(f) & 12(b) NAAC – 'A' Grade Accredited Institute)

[www.krgcgwalior.org](http://www.krgcgwalior.org) [krgc@rediffmail.com](mailto:krgc@rediffmail.com) Phone: 0751- 2625495, 0751-2438173

		o m.									
	M.Sc.	M . Sc .	Biotechnolo gy		14	02	06	00	22		
		M . Sc .	Botany		20	13	07	00	40		
		M . Sc .	Chemistry		14	10	03	00	27		
		M . Sc .	Mathematic s		22	20	08	00	50		
		M . Sc .	Physics		26	06	00	00	32		
		M . Sc	Zoology		12	17	06	01	36		



		.								
		M			09	01	01	00	11	
		Sc	Food and							
		.	Nutrition							
		(H								
		S)								
		M	Family		03	00	00	00	03	
		Sc	Resource							
		.	Managemen							
		(H	t							
		S)								
		M	Human		00	00	00	00	00	
		Sc	Developme							
		.	nt							
		(H								
		S)								
<b>Total</b>					492	364	112	04	972	
<b>PG Diploma</b>										
	PG				04	07	08	00	19	
	Diploma	PGDCA								
<b>Total</b>					04	07	08	00	19	



UG										
	B.A.	B.A.		518	449	283	07	1257		
	B.COM	B.COM		543	495	128	02	1168		
		B.COM COMP.		20	30	08	00	58		
	BBA	BBA		42	09	03	00	54		
	BCA	BCA		16	08	01	00	25		
	B.SC	B.SC (BIO)		161	174	87	06	428		
		B.SC (MATHS)		124	84	29	03	240		
		HOME SCIENCE		03	05	02	00	10		
	BA LLB	BALLB		33	16	13	00	62		
<b>Total</b>				1460	1270	554	18	3302		

**S4**

#### **5. The Student Experience (4 pages)**

Briefly describes student life in the college, the facilities available to students (accommodation, meals, libraries, sporting facilities etc.), and student support services (financial aid, medical



facilities, counselling services, mentoring programs etc.). Highlights, in particular, major student welfare initiatives over the past year.

Infrastructural facilities available to students - Classrooms, Smart classrooms, laboratories and equipment, Hostel; Canteen; Garden; Students common room, Auditorium, Sports Complex & other facilities :

- **Class Room** - **133**
- **Smart Classrooms** - **15**
- **Laboratories** - **40**
- **Major Equipments-UV Spectrophotometer, Refrigerated Centrifuge,- Deep Freeze**

**Atomic absorption spectrophotometer etc**

- **Common Research Lab** - **No**
- **Hostel** - **02**
- **Canteen** - **01**
- **Garden** - **05**
- **Students common room** - **02**
- **Auditorium** - **01**
- **Sports Complex** - **No**
- **Sports grounds** - **02**
- **Gym** - **available**
- **Library as a learning resource- advisory committee, its composition, facilities & services (e & print), annual improvement initiatives**

**Facilities and Services available in Central Library -**

**Total No. of Print Books** **121997**

**Print Journals** **25**



**Fully Automated Library (SOUL Software) 2.0**

<b>E-Books</b>	<b>9500</b>
<b>E-Journals</b>	<b>34000</b>
<b>News Papers</b>	<b>13</b>
<b>Magazines</b>	<b>17</b>
<b>Reprographic Machine</b>	<b>02</b>
<b>E-Library</b>	<b>10 Computers</b>
<b>Online Resources</b>	<b>Inflibnet available</b>
<b>Book Bank Scheme</b>	<b>available</b>

- Student support services:
- ✓ IT enabled services

- All departments are Wi-Fi enabled.
- Online Fees Submission
- Online compilation and declaration of Results
- MIS implemented
- Online application and approval of Scholarships
- Digital display of necessary information and notices for students
- Help center with IT facility has been established in the college as student support Facility.
- Use of IT facilities for teaching
- e-learning resources available for teaching
- Inflibnet, Smart Class Rooms



- ✓ Personal enhancement & development schemes- NCC, NSS, Facilities for physically challenged & slow learners; Tutor-Guardian Scheme, Grievance Redressal Cell, Entrepreneurship Cell, Remedial classes, Career Guidance Cell.

### **Personal enhancement & development schemes**

- NSS : College NSS wing comprising of **341** volunteers
- NCC: A separate NCC office with a store room. College NCC wing comprising of **56** cadets
- Grievance Redressal Cell: Grievance Redresses Cell deals with the grievances expressed by students.
- Facilities for physically challenged & slow learners: Equal Opportunity Cell has been established in the College to address the needs of the differently abled students. Samridhhi group has been designed to help slow learner in academics, in each section of all the classes.
- Tutor-Guardian Scheme: Tutor–Guardian Scheme exists in the College. Respective Cell organizes periodical meeting with parents and collect feedbacks. Suggestions and advices are received.
- Remedial Classes: Remedial classes are conducted regularly to meet the requirements of the students.
- Extension lecture series in various disciplines is conducted to impart education by experts available in various streams
- Short term certificate courses are conducted in various subjects to provide value added education and enhance skill.
- Entrepreneurship Cell/Placement Cell: Placement Cell is functioning in the College. Periodically campus interviews and placement relevant activities are organized for the benefit of the students.





### Other Facilities

- Career guidance cell organizes various carrier oriented training programs in different fields. It also provides platform to sharpen their skill to seek employment.
- Tutor-Guardian Scheme
- Grievance Redressal Cell
- Entrepreneurship Cell
- Remedial classes

### Scholarships Schemes

- ✓ Financial assistance ( scholarships/ schemes for SC/ST/OBC/ minority, Group & Health Insurance Schemes)

Various scholarship schemes are implemented for students' welfare and academic support by state and central Government:

#### Post Metric Scholarship Schemes (Benefits of only one scheme is allowed)

- मुख्यमंत्रीजनकल्याण (शिक्षाप्रोत्साहन) योजना
- Post Metric Scholarship Scheme [OBC Students]
- Post Metric Scholarship Scheme [SC Students]
- Post Metric Scholarship Scheme [ST Students]
- Mukhya Mantri Medhavi Vidhyarti (MMVY) Yojana (MMVY)

#### Awas Sahayata Schemes (Benefits of only one scheme is allowed)

- Awas Sahayta Yojana [SC Students]
- Awas Sahayta Yojana[ST Students]

### Schemes of Higher Education Dept

- Gaon Ki Beti Yojna



- Pratibha Kiran Scholarship Yojna

#### Other Schemes

- SAMNY CHHATVRATI
- Deviyang CHHATVRATI
- Maharishi Valmiki Scheme
- General/OBC Students Scholarship Scheme
- Merit Scholarship Scheme

#### Scholarships sponsored by National agencies

- Central sector (by Central Government)
- Private and Public Sector Organization
- Inspire
- Minority

S. No.	Schemes	No. of Students	Amount (In Rs.)
1.	Post Metric Scholarships for S.T. Students	6	47638/-
2.	Post Metric Scholarships for S.C. Students	1169	7793377/-
3.	Post Metric Scholarships for O.B.C. Students	2904	15700940/-
4.	Gaon ki Beti Yojna	226	1130000/-



5.	Pratibha Kiran Yojna	6	30,000/-
6.	Central Sector	184	2,480,000
7.	Minority Scholarships	12	48,000
8.	Handicap Scholarships	2	
9.	Awaas Sahitya Yojna	223	5162000/-
10.	Mukhya Mantri Medhavi Yojna	705	
11.	Sambal Yojna	82	
12.	Book Bank Distribution	828	601541
13.	SC, ST, Ph. D State Scholarships	2	

## 6. Student Achievements (5 page)

Highlights the most significant academic and non-academic achievements of students over the past year. This can include major academic awards and scholarships received, student research, and sports and other extracurricular activities. Focusses, in particular, on profiling top achievers and describing how resources provided by the college helped these students succeed.

### ACADEMIC

- Merit

S.No.	Name of the award/medal/meritorious scholarship	Name of the Recipient	Class	Area of Achievement



Due to COVID Pandemic event could not be organised

**Research scholarship/ award**

1.	UGC NET/ JRF	ANAMIKA DEVI	Ph.D Scholar	Sanskrit
2.		RANJANA SANJAY	Ph.D Scholar	Hindi
3.	UGC NET/ JRF	NIDHI SACHAN	Ph.D Scholar	Home Science (Food and Nutrition)
4.	UGC NET/ JRF	ARNIKA YADAV	Ph.D Scholar	Hindi
5.	UGC NET/ JRF	SAPNA PATHAK	Ph.D Scholar	Hindi
6.	UGC NET/ JRF	RENU SINGH	Ph.D Scholar	Hindi
7.	UGC NET/JRF	SUMAN YADAV	Ph.D Scholar	Hindi
8.	UGC NET/JRF	ANITA BANSAL	Ph.D Scholar	Hindi



9.	UGC NET/JRF	BABITA SINGH	Ph.D Scholar	Hindi
10	UGC NET/JRF	ALQUAMA ANSARI	Ph.D Scholar	Drawing and PaintinG
11	UGC NET/JRF	ABHA YADAV	Ph.D Scholar	Hindi
12	UGC NET/ JRF	SHIVANGANA BHADORIA	Ph.D Scholar	Home Science (Food and Nutrition)
13	UGC NET/ JRF	CHITRANGADA PARAG	Ph.D Scholar	Home Science
14	STATE GOVT.	SAHANA KEN	Ph.D Scholar	History
15	STATE GOVT.	SAMTA SAINI	Ph.D Scholar	
16	STATE GOVT.	MONIKA MOURYA	Ph.D Scholar	

### Cultural Activities

- Participation

S.no	Name of the event	District Level	State Level	University	National Level
1	Shlok pathh				



	Competition For Bhavbhuti Samaroh				
2	Debate Competition Bhavbhuti Samaroh				
3	Hindi Bhashan Competition Bhavbhuti Samaroh				
4	Sanskrit Bhashan Competition Bhavbhuti Samaroh				
5	Essay Writing Competition Bhavbhuti Samaroh				
6	Prize Distribution Program of Sports Dept.				
7	Bhatkhande Program				
8	Essay Writing				
9	Cultural Performance on Yuva Samvad Programme				



10	Annual Function				
11	Cultural Program by NSS				

### Awards and Achievements

Name of the student	Event	Award/Achievement
Megha Senthia	Essay Writing Competition	First Place
Poonam Pal	National Integretion Camp	Most Valuable Student of the camp
Kavita Sharma	Shooting Competition	Bronze Medal
Vanshita Goswami	Basket Ball Event	Participation
Niharika Kaurav	Kata	Bronze Madal
Niharika Kaurav	Kumit	Gold Medel
Ankita Bhadoriya	Hindi Bhashan	First Place
Saniya Jain	Shlok Path	Second Place
Niharika Kaurav	karate kumit Event	Gold Medel
Krishna Rawat	Half Marathon	First Place



✓ **Major student welfare initiatives over the past year**

- Earn while you learn
- Equal Opportunity Cell
- Various scholarship Cell
- Grievance Redressal Cell
- Women Development Cell
- Different cells constituted for welfare of the students
- Mentoring Cell
- Sexual harassment cell

Reward for best performers

**Extension Activities**

<b>Name of the activity</b>	<b>Organising unit/ agency/ collaborating agency</b>	<b>Name of the scheme</b>	<b>Year of the activity</b>	<b>Number of students/teachers participated in such activities</b>
NSS cadets on a Helpdesk for disabled people at Birla Nagar Dispensary	NSS	Sevarth	2018-19	68
Poster Exhibition at "LNIP" Gwalior for the awareness of Voting for 18+ in the presence of Chief	Voting Awareness Cell	ISR-Jagrati	2018-19	44





Election commissioner Mr O.P. Rawat on				
Extension Activity at GR Medical College Gwalior	NSS & Medical College	Sevarth	2018-19	31
Contribution in Kerala government Disaster Relief Fund	NSS	Sevarth	2018-19	58
College students weekly imparted their services on helpdesk Thathipur Dispensary	Saksham Sanstha	Sevarth	2018-19	87
Organizing Swachhta Jagrukra Rally at Huzrat Area	NSS	Shuchita	2018-19	71
Cleanliness Awareness Rally at District Reserve Police Campus Bahodapur Gwalior	DRP Line	Shuchita	2018-19	66
Cleanliness Awareness Rally at Railway Station	NSS	Shuchita	2018-19	58
Extension Lecture on Mental Health for the girl students of NITM organized	NSS	Sarve Santu Niramaya	2018-19	62



by NSS- KRG College				
NSS Volunteers Training Programme for Voting Awareness conducted in Collectrate	NSS	ISR-Jagrati	2018-19	22
Human chain by Faculty, Students and NSS Voulanteers on Voter Awareness at Maharaj Bada	NSS	ISR-Jagrati	2018-19	119
AIDS Awareness rally and Poster Presentation in Jiwaji University on by Red Ribbon Club and NSS.	Red Ribbon Club Jiwaji University & NSS	Sarve Santu Niramaya	2018-19	64
Swachhta Rally from College to Naya Bazaar	NSS	Shuchita	2018-19	58
Rally to Promote Yoga on Yuva Diwas at LNIPE Gwalior	NSS & Sports	Sarve Santu Niramaya	2018-19	74
Legal Awareness Camp on POCSO Act In Collaboration with Rose Foundation -Additional Sessions Judge Sachin	Law	ISR-Jagrati	2018-19	64



Sharma Addresses Woman of the city & Girls of the College				
Mahila Bal Vikas & K.R.G College in Collaboration Organized Awareness Program on URJA- Urgent Relief Just Action for the Girls of the College & Padma School	Law	ISR-Jagrati	2018-19	66
Awareness Progrmme on Women Empowerment at Vivekanand Needam by NSS	NSS	Saksham	2018-19	55
Awareness Rally on International Environment Day at Jiwaji University	NSS	Haritima- Harit Vasundhara	2018-19	62
Distribution of food to Homeless People in Ashray Bhawan Jayarogya Hospital, Gwalior	NSS	Sevarth	2018-19	23



### Plantation Program

S.No.	Session	Inside College campus	Outside College campus
1	2018-19	150	135

### Social Welfare Activities

- 04/0/2018 Help Desk for Disabled people
- 05/08/2018 Voter Awareness Program
- 19/9/19 Induction Program on NSS by NSS Volunteers and NSS Officer
- 23/9/19 Cultural Program on "Sthapana Diwas"
- 25/9/19 Play enacted by NSS Volunteers to show women's Status
- 28.9.19 Free Camp on Disabilities and Blood Pressure 50 People were Screened

### NCC

S.No.	Name of Event	District Level	State Level	University Level	National Level
1.	Himanchal Track	—	—	—	—
2.	TSC Delhi	—	—	—	—



## NSS

S.No.	Name of Event	District Level	State Level	University Level	National Level
1	Soil lifting and demolition work in all Veerpur dam deepening program of Jiwaji University	—	-	—	
2	Feed and water program for birds	-	-	-	
3	International environment day plantation	-	-	-	
4	Cleanliness rally, cleanliness work	-	-	-	
5	Cleanliness India summer internship poster slogan Essay competition	-	State Level	-	-----
6	Martyrdom day program of Veerangana lakshmibai ji at the mausoleum	—	State Level	—	-----
7	Participation of students in the celebration of LNIPE	—	State Level	—	-----
8	Cleanliness program	—	State Level	—	-----
9	World population day street play		State Level		-----
10	Poster making work on voter awareness		State Level	Jiwaji Uni	
11	Cleanliness rally, street play	College	-----	-----	-----
12	Presentation of posters and	College	-----	-----	-----



	discussion programs in demonstrations based on voter awareness				
13	Rally on environment awareness, tree plantation	College	----	----	----
14	Competition on the topic of environmental protection	College	----	----	----
15	Relief fund collection for Kerala post-victims, deposited	College	-----	-----	-----
16	Craft competition	College	----	----	----
17	Survey work rally on cleanliness about Godgram Bhaipura Ghatigaon of Jiwaji University	College	----	----	----
18	Capable organization and indian dental association (I.D.A.) free Dental examination camp, eye donation awareness seminar	College	----	----	----
19	Participation in Udaan coaching, smart class inauguration program	College	----	----	----
20	Ra. Se. Yo foundation day	College	-----	-----	-----
21	Surgical strike day poster lecture	College	----	----	----
22	Garden construction, cleanliness rally	College	----	----	----
23	Participation in 'cleanliness is	College	----	----	----



**कार्यालय प्राचार्य, शासकीय कमलाराजा कन्या स्नातकोत्तर स्वशासी महाविद्यालय, ग्वालियर**  
**GOVT. KAMLA RAJA GIRLS P.G. AUTO. COLLEGE, GWALIOR (M.P.) INDIA**  
*(Affiliated to Jiwaji University, Gwalior under 2(f) & 12(b) NAAC – 'A' Grade Accredited Institute)*  
**www.krgcgwalior.org krgc@rediffmail.com Phone: 0751- 2625495, 0751-2438173**

	service' program at Jiwaji University				
24	Participation in leprosy seminar by Jiwaji University Unit	College	-----	-----	-----
25	Writing posters, slogans, essays under prohibition week	College	-----	-----	-----
26	Alcohol prohibition week - awareness rally in kampu area, presentation of street show in nehru garden	College	-----	-----	-----
27	Poetry recitation speech, dance drama	College	-----	-----	-----
28	Disaster management and council program by Border security rescue team	College	-----	-----	-----
29	Voter awareness rally	College	-----	-----	-----
30	Self-defense techniques, trial court	College	-----	-----	-----
31	Nation gathers divas on rally	College	-----	-----	-----
32	Participation in cleanliness workshop at municipal corporation Gwalior	College	-----	-----	-----
33	Application for civil defense membership by disaster management institute	College	-----	-----	-----
34	100% polling by the volunteers in the district magistrate's office	College	-----	-----	-----



	council in handicapped voting				
35	Rally on voter awareness	College	-----	-----	-----
36	Women's awareness maternity mini marathon scheme (district election office, Ra. Se. Yo Jiwaji University)	College	-----	-----	-----
37	Human chain on Maharaj Bada of the city for voting awareness by commissioner municipal corporation	College	-----	-----	-----
38	Shelter home, survey area	College	-----	-----	-----
39	Aids awareness rally - poster, slogan competition	College	-----	-----	-----
40	Help with cooking at the shelter	College	-----	-----	-----
41	V.R.G participation in the poster making competition in the college	College	-----	-----	-----
42	Essay competition on national youth day	College	-----	-----	-----
43	National youth day youth marathon organized at Jiwaji University	College	-----	-----	-----
44	National Voters Day - pledge program	College	-----	-----	-----
45	Clothing bank started – Ra. Se. Yo. and prostitute assembly	College	-----	-----	-----
46	Road safety week - general	College	-----	-----	-----





	awareness competition				
47	Participation of girl students in the program for the best education system in bhagwat sahay auditorium	College	-----	-----	-----
48	Stall set up under employment fair	College	-----	-----	-----
49	International women's day	College	-----	-----	-----
50	Seven day residential camp	College	-----	-----	-----

## Sports

### Participation

S.No.	Name of Event	Inter College	Div. level	District Level	State Level	University Level	National Level
1	Yoga						
2	Basket Ball	✓					
3	Chess	✓					
4	Cross Country	✓					
5	Swimming						
6	Volly Ball		✓				
7	Cricket	✓					
8	kabaddi	✓					



9	Kho-Kho	✓	✓	✓			
10	Hand Ball	✓					
11	Athletics	✓					
12	Volly Ball	✓	✓		✓		
13	Foot Ball	✓					
14	Hockey						
15	Table Tennis	✓			✓		
I	Soft Ball	✓					
Ii	Hockey	✓					
Iii	Base Ball	✓					

The Faculty members encouraged and assisted these students in many ways. They provided them with the facilities not only available in the College but from outside the College also such as arranging trainers/mentors for specialised activities. Arranged special lectures etc. on demand of students. The College also provided its skilled students with the financial support.

## **7. Research Activities (4 pages)**

Identifies major research themes, places these themes in their social and economic context, highlights major research achievements (publications, collaborations, intellectual property produced, external funding received etc.), and profiles top researchers. Lays out the research agenda and identifies themes for the coming year.



### Major research Themes

S. No.	Department	Prioritized research area and expertise	Social/ Economic Context
1	Home Science	Therapeutic/Clinical Nutrition Community Nutrition	Validation of therapeutic effect of natural foods in most prevalent non communicable diseases like diabetes and hyperlipidemia. To suggest cost effective therapies using natural foods in alleviation of these disorders
2	Home Science	Adolescent Study	Development of identity and personality, changing relationships andf their connection with parents and peers
3	Geography	Environmental Geography & Geography of Health	Holistic perspective of health encompassing society and space
5	Political Science	Indian Political Thought, Indian Democracy, Political Theory,	To have a solid understanding for the system which govern



S. No.	Department	Prioritized research area and expertise	Social/ Economic Context
		Gender Studies	the society and to understand the global political economy
6	History	History of Bundelkhand	Awareness of Cultural Heritage
7	Music	Dhrupad, Khayal,Dance	To enhance the schools of music and to create
8	Painting	Wall Paintings, Raagmala,Pandulipi	To develop the skill of particular school and to revive and transfer our heritage,art and culture
9	Hindi	Samkaleen Kavita,Hindi ka Vaishvikaran	Substantive finding of New trends of poetry
10	English	Gender Studies,Postcolonial Studies, Indian Writing in English, Partition Studies	Major impact on the development of society, changed political system and exposed injustice
12	Sanskrit	Hindu & Jain Darshan	to revive and transfer our heritage, literature and culture



S. No.	Department	Prioritized research area and expertise	Social/ Economic Context
13	Urdu	Qadeem Deccan Shayari	To add and enhance Urdu Adab
14	History	Gandhian Philosophy& Tourism	Worldwide solutions to the problems
15	Zoology	Wild Life, Aquatic Biology& Limnology	To study adverse effects of pollution on wild and aquatic life
16	Botany	Environmental,Issues,ethnobotanical studies of the area	Conservation of biodiversity
16	Chemistry	Thermodynamics Properties Surfactants, Natural Product & Synthetic Organic Chemistry	Important role in pharmaceuticals, Food industry, cosmetic industry, paint industry
17	Biotechnology	Microbial and environmental biotechnology	helpful in medical sciences, Agriculture



**Publication in National and International Journals/ Anthology**

**Publication in Journals & Anthology -101**

S.No	Name of the Faculty	Name of the Journal	Title of the paper	ISSN No
1.	Poorti Pandey	GENE	Role of Forkhead Box O (FOXO) transcription factor in aging and diseases	Online ISSN: 1879-0038 Print ISSN: 0378-1119
2.	Dr. S.K. Yadav,	ITF Jabalpur	Multiple associates in Functional Diversification of Cocoon and Korbi of antheraea Paphia linn	1970-1494
3.	Dr. Mohit Arya	Annals of Plant Sciences 7.8, pp. 2398-2402	Macrophyte diversity and trophic status of Sakhya Sagar Lake, Shivpuri, Madhya Pradesh, India.	2287-688X
4.	Pratima Jain	International Journal of Science and Research, Vol-7, Issue-11	Effect of Solvent System on Critical Micelle Concentration Using Viscosity Equations for anionic surfactants at Various Temperatures	ISSN:2319-7064
5.	Prof. Urmila singh Tomar	Ingit sambhagiye mahilao sahitayakar sammelan visheskank	Bhartiye samaaj me striyo ke liye dohare maapdand samajik vidhaan : kamiya	ISSN: 2454-6305



			va chunotiya	
6.	Charu Katare	Progress in Nutrition 2018; Vol. 20, Supplement 1: 5-14	Medicinal uses of honey: A review on its benefits to human health	DOI: 10.23751/pn.v2 0i1-S.6394
7.	Dr. Madhubala Kulshrestha	Journal of the Madhya Pradesh Itihaas Parishad No. 31 P: 1- 09	Scindia rajao ke Gwalior kila taksaal se Jaari Chandi ke Sikke : Ek Adhyayan	2231-2749
8.	Dr. Madhubala Kulshrestha	A Journal of Historical Research Shodhak Vol.48 P: 245-252	British Aupniveshik kaal mein nirmmit Gwalior ka Victoria College Bhawan: Ek Adhyayan	0302-9832
9.	Dr. R.B. Raipuriya	Asian Journal of Chemical and Environmental research, Vol-11,	One pot Multi component synthesis of Highly functionalised piperidine: A Green Approaches	0974-3049
10.	Dr. Madhubala Kulshrestha	Chattishgarh Vivek No. 62 P: 25-28	Balikayon ka Ghattha Anupat: Doorgaami Parinam evam Nidaan ek Chintan	0972-9909
11.	Dr. Beena lad	Universal Review Vol: VIII Issue	Diasporic consciousness and identity quest in jhumpa lahiri's the Namesake"	ISSN: 2277- 2723
12.	Dr. Archana Kushwah	International Journal of Innovative Social Science and Humanities Research, Double Blind Peer	Paryavaran ke Samaj Shastriya evam Manviya Pahaluo ka mulyankan	Print ISSN: 2349-1876 Online ISSN: 2454-1826



		Reviewed refereed research Journal Vol.:6, Issue:2		
13.	Dr. V.K. Agrawal	International Journal of Research, Vol.:8	Women empowerment through skills development and vocational education	2236-6124
14.	Dr. Madhu laxmi Sharma	International Research Journal of Current Research Vol.: 11, issue: 3	Study of Sink Parameters in the field of Phaseolus Mungo under different Treatments	0975-833X
15.	Dr. Abha Varshney	Charmanvati Research Journal of geography Vol.: 14	Vrahattar Gwalior mein Jansankhya parivartan ki pravattiya : Ek Bhogolik Vishleshan	2277-9892
16.	Prof. Urmila singh Tomar	Sankalay trimashik Year :46 No: 4	Adiwasi samajik sanrachan me niyay viyavastha	2277-9264
17.	Prof. Urmila singh Tomar	Ingit anchal ka lok sahitiye	Chambal anchal me prachalit sohar geet	ISSN: 2454- 6305
18.	Dr. Meena Shrivastava	Journal of Madhya Pradesh Itihas Parishad No: 31	Vankhandeshwar shiv mandir ka Atihasik paridrashya	ISSN: 2231- 2749
19.	Dr. Madhu laxmi Sharma	International Journal on Biological Sciecnes 9(1)	Traditional Knowledge and Gastrointestinal Disorders: A Survey Report	ISSN: 0976 - 4518
20.	Dr. Archana Kushwah	Samaaj Vigyaan Shodh Patrika, Vol.:2, No.:64	Technology- Boon or Bane for the Society?	0973-7626





21.	Dr. Manju Dubey	Naveen Shodh Sansaar and International Peer Reviewed Research Journal Vol.-2, Jan to Mar 2019	Dabra vikaskhand ki Shishu Jansankhya ke Poshan Star ka Adhyayan	23943793
22.	Dr. Manju Dubey	Naveen Shodh Sansaar and International Peer Reviewed Research Journal Vol.-3, Jan to Mar 2019	Morar Vikaas Khand ke nagariya evam Gramin Baalak evam Balikayon ke Poshan Star ka Tulnatmak Adhyayan	23943793
23.	Dr. V.K. Agrawal	Research Line A Quarterly Multi Disciplinary and Refereed International research Journal, Vol-29,	Adhunik Bal-sahitya ke srijankarta surendra vikram	2321-2993
24.	Dr. V.K. Agrawal	Research Line A Quarterly Multi Disciplinary and Refereed International research Journal, Vol-29,	Adhyapak prashikshan ki upadayta	2321-2993
25.	Dr. Madhubala Kulshrestha	Shodhak A Journal of Historical Research , Vol-49	Scindia rajao ke Gwalior kila taksaal se Jaari Sikke : Ek Adhyayan	0302-9832
26.	Dr. Charanjeet	Research line A	Kanya bhrun hatya ke karan	ISSN: 2321-



	kaur	Quarterlry Multi Disciplinary & Referred International Research Journal Vol: 32	aur roktham ke upaay	2993
27.	Dr. Savita Shrivastav	Journal of Emerging Technologies and Innovative (An International open Access Journal)Research Vo.6, Issue 3	Dislocation and post Colonial Discourse in the Selected Novels of Amitav Ghosh	2349-5162
28.	Dr. Charu Chitra	Research Review International Journal of Multidisciplinary Volume 3, Issue 08,	Partition: A dehumanizing Episodes in the lives of refugees	2455-3085
29.	Dr. Charu Chitra	IJELLH International Journal of English Language And Humanities Volume7,Issue11,Feb ruary 2019	Study of Postmodernism and Politics in the novel of Meena Kundaswamy The Gypsy Goddess Pg.no349- 356	2321-7065
30.	Dr. Shailja Jain	The Pharma Innovation	To study the anti hyperglycemia activity of porridge (A fiber rich dietary supplement) in type II diabetic subjects	ISSN (E): 2277- 7695,ISSN (P): 2349-8242
31.	Dr. Pratima	International Journal	Thermodynamic parameter	ISSN 2321-



	Jain	of Engineering Science and computing Vol.8 Issue no.6	of Quaternary Ammonium Salts TMAC, TEAB, TBAB and TBIA in Aqueous and metabolic Solutions at 298.16K, 303.16K, 30.8.16K and 313.16K by Conductivity Measurements	3361
32.	Pratima Jain	Journal of emerging technology and innovative research (JETIR)	Thermodynamic Parameters of Anionic Surfactants Sodium Stearate, Sodium Oleate and Sodium Laury Sulphate in Binary Solvent Systems at Various Temperatures, Journal of Emerging Technologies and Innovative research (JETIR), November 2018 Volume 5, Issue 11, PP5-18 Yogyata Singh and pratima Jain Impact factor 5.87	ISSN:2349- 5162
33.	Dr. Deepti jain	Journal of Magnetism and Magnetic Materials	Anomalous Magnetic Properties of Fe <sub>3</sub> O <sub>4</sub> Nanostructures on Gaas Substrate Probed using X- ray Magnetic Circular Dichroism	2.993



34.	Dr.Waseem Iftekhhar Ansari	INTERNATIONAL QUARTERLY JOURNAL ADBI NASHEMAN LUKHNOW (U.P.)	BURHANPUR MEIN KATBA SHANASI KI RIWAYAT	ISSN-2581- 5482
35.	Dr. Charu Chitra	IOSR Journal of Humanities and Social Sciences Vol. 24, Issue 1, Series 10, January 2019	The Curfew Nights by Basharat Peer and The Half Mother by Shahnaz Bashir depict The Women as a part of Resistance Movement of Kashmir	e ISSN 2279- 0837P ISSN 2279-0845
36.	Dr.S.K. Yadav,	ITF Jabalpur	Regression Function in the silk Associates From the sal forest in Ecorace korbi of tropical tasar silk cocoons of Antheraea paphia linn	1970-1494
37.	Dr. Shailendra singh Tomar	Review of research International Recognition Multidisciplinary Research Journal,	A Mathematical aspect of forest growth	2249-894X
38.	Dr. A.k yadav	Review of research International Recognition Multidisciplinary Research Journal,	A Mathematical aspect of forest growth	2249-894X
39.	rashmi	Review of research International	A Mathematical aspect of forest growth	2249-894X



		Recognition Multidisciplinary Research Journal,		
40.	Dr. Charu Katara	Progress in Nutrition 2018; Vol. 20, Supplement 1: 191- 198	Evaluation of the antihyperglycemic, antilipidemic and antioxidant potential of Cucurbitaficifolia in human type 2 diabetes	DOI: 10.23751/pn.v2 0i1-S.6654
41.	Dr. D.P. Singh	Review of research	Mirzapur Janpad mein Bhoomi Upyog ka Vitran	2249-894x
42.	Dr. D.P. Singh	Gritted minds	Jansankhya Vraddhi aur Vaayu Pradushan Ek Paryavaraniya Chunoti Gwalior Chambal Sanbhaag ke Sandarbh mein	2320-7540
43.	Dr. D.P. Singh	Gritted minds	Bhhomi Upyog Pratiroop mein Badlaav Gwalior Jile ke Vishesh Sandarbh mein	2230-7540
44.	Smt. Swapna Marathe	Shodhayan (An International Quarterly Multidisciplinary Research Journal ) No:26	Bhartiya Sangeet Ki Gayan Vidha: Thumri Gayaki	ISSN No.: 2249-7536
45.	Dr. Asha Singh Rawat	Pramana Research Journal	Shrimad Bhagwat ke Updesho mein Varnit Bhakti ki Mahima	2249-2976



46.	Dr. Asha Singh Rawat	Chintan International muliyankit research journal Year:8 No-31 P:62-68	Shrimad Bhagwat ke sambado me varnit bhakti ka mahathmay	2229-7227
47.	Dr Asha Sing Rawat	Pramana Quarterly Research Journal, year: 8, Issue 32	Shrimad Bhagwat Puraan me Soot-Shaunak Samvad ki Bhumika Evam mahatva	2249-2976
48.	Dr. Asha Singh Rawat	Chintan Research Journal, year: 9, No.: 34	Shrimad Bhagwat Puraan mein updesb yojna ki Bhumika avam Paryalochan	2229-7227
49.	Dr. Asha Singh Rawat	Chintan Research Journal, year: 9, No.: 34	Shrimad Bhagwat Puraan mein varnit purusharth chintan	2229-7227
50.	Dr. Madhubala Kulshrestha	Research Journal of Historical and Archeological bundelkhand itihash parishad evash shodh sansthan sagar History Times Vol-2 P: 64-69	Gwalior ke Veersingh dev Tomar: Tatkaalin Sakshyo ke sandharbh mein	2321-5054
51.	Dr. Abha Mishra	Lokmangal Patrika Year:11 No. 46	Kamayani ke Darshan Tatva	ISSN 2250-0448
52.	Dr. Kalpana Sharma	Lokmangal Patrika Year: 11 No.:46	Morena Gaon ke 'Dauji' ki adhbhut Leela	2250-0448
53.	Dr. Abha Mishra	Lokmanagl	Prayojan Moolak Hindi mein Paribhashik Shabdawali ki bhumika	ISSN 2250-0448
54.	Dr. Shailendra	Research analysis and	Bundelkhand ke Jal	0975-3486



	Singh and	evaluation	Sansadhan evam Samasyayein	
55.	Charanjeet singh kaur	A Journal of Asia For Democracy and Development Vol: MVIII(1-2)	Parivaro evam vridhashram me rehne wale vridhdho ke santosh ke star ka tulnatmak adhyyan karna	Issn: 0973-3833
56.	Dr.Lata mishra	Cyber Literature Vol:XXI (Issue 42) No:2	The Unbroken bond between a father and a son in cormac McCarthy's The Road	ISSN: 0972- 0901
57.	Dr. N.K. Nagaich	Abhivyanjana Vol-7, Issue-4	Shaskiya Sansthano mein karyarat vivahit evam avivahit kamkaji mahilao ki uplabdhi abhiprerna ka tulnatamk adhhyayan	2277-9884
58.	Dr. N.K. Nagaich	Abhivyanjana vol-8, Issue-1	Police vibhaag me karyarat varistha evam kanistha adhikaariyo ke samayojan ka tulnaatmak addhyan	2277-9884
59.	Dr. N.K. Nagaich	Abhivyanjana vo-7 issues-4	Shashkiya evem ashashkiya vidhyalayo me karyrat sikshko ki vishadi pravritiyo ka tulnaatmak aadhyan	2277-9884
60.	Dr. N.K. Nagaich	Avadharna Vol-5 Issue -4	Ashakshkiya sansthano me karyarat vivahit evam avivahit kaamkaji mahilao	2350-059x



			ke pratibal star ka tulnatmak adhyayan	
61.	Dr.Kumkum Mathur	Journal of the mp Ithihas parishad number-31 P: 104-108	Sangeet evam chitrakala ka samanvay ragmala/rag- ragini chitra kala	2231-2749
62.	Dr. Meena Shrivastava	Central India Journal of Historical and Archaeological Research Vol: 7-8 joint Issue No:26/27	Kampoo kothi athba kamalaraje mahavidhyalay ka atihashik paridrashyay	ISSN:2277- 4157
63.	Dr. Sanjay Swarnkar	ITIHAS SANSKODHAN, CIHRF, GWALIOR, VOL-6, NO.13, JULY, 2018	SAHARIYA JANJATI KI LOK DEVIYA : LODI MATA KE VISHESH SANDARBH MEIN, P. 37- 45;	ISSN : 2277- 5609
64.	Sukriti Ghosh	Naveen Shodh sansar (An International Research Journal)	Social Responsibility- A road map to Environment Sustainability	2320-8767
65.	Dr. Charu Chitra	Research Review International Journal of Multidisciplinary Volume 3, Issue 08, August 2018 Pg.585- 589	Confusion and Trauma Suffered by Women during Partition: A study of Selected Short Stories	2455-3085
66.	Dr. B.B. Singh	The <i>Ad Hoc Networks</i> is an international archival journal	Bandwidth Efficient Designated Vefifier proxy signature for healthcare wireless senor networks	4.816





67.	Charanjeet singh kaur	Research line A Quality Multi Disciplinary & Referred International Research Journal Vol: 32	Bhartiya parivaro me mahilao ke viruddh gharelu hinsa	ISSN: 2321- 2993
68.	Archana Kushwah	International Journal of Scientific and Innovative Research Studies Vol: vi, No.12	Ekkisvi Sadi mein Paryavaran aur Jalvayu Parivartan ke Vinashkari Khatre	2347-7660 (print) 2454- 1818 online
69.	Dr. P.K. Bansal	Shodhayan, No.-27, Year-6	Impact of organizational environment on job satisfaction among police employee in gwalior	2249-7536
70.	Dr. Harish Kumar Agrawal	A Journal of Asia for Democracy and Development	Sukshm vitt ki samasyaen AVN sambhavnayen Chambal sambhag ke sandrbh mein	0973-3833
71.	Dr. B.B. Singh	The <i>Ad Hoc Networks</i> is an international archival journal	Efficient message recovery proxy blind signature scheme from pairings	4.816
72.	Alka singh	published in international journal of research (IJR)	A themetic study of charlotte bronte's the professor 1857	2348-6848
73.	Dr. Charu Chitra		Confusion and Trauma Suffered by Women during Partition- A study of	2321-7065



			Selected Short Stories	
74.	Dr.Waseem Iftekhar Ansari	INTERNATIONAL MONTHLY JOURNAL HAKIM UL UMMAT SRINAGAR KASHMIR	DR TAQI ABEDI KA KARNAMA	ISSN-2395- 6240
75.	Dr. Kumkum Mathur	Central India journal of historical and archaeological research vol. 6/7 no 24/25 P: 173-177	Gwalior ke ganesh mandir ka pratimankan	2277-4157
76.	Dr. Lata mishra	The Expression an international Multidislinary E- Journal Vol:4 Issue-6	Situating marxo-Praxis in arundhati roy's the god of small things and aravind adiga's the white tiger	Issn:2395-4132
77.	Dr. Archana Kushwah,	International Journal of Scientific and Innovative Research Studies Vol: vi, No.12	21 vi sadi mein Paryavaran aur Jalvayu Parivartan ke Vinashkari Khatre	2347-7660 (print) 2454- 1818 online
78.	Dr.Lata mishra	Lang lit An international peer reviewed open access journal Vol.5 issue-3	Dystopic Environmental Scenarios in contemporary climate change fiction	ISSN: 2349- 5189
79.	S.K. Yadav	Journal of Tropical Forestry A Quarterly Journal Devoted Forestry research and	Regression Functions in the Silk Associates in Ecorace korbi of Tropical Tasar Silk cocoons of Antheraea	0970-1494



		development in tropical countries, Vol.:36, No.:4	Paphia Linn	
80.	Meenal Gokhale	Naveen Shodh sansar (An International Research Journal)	Social Responsibility- A road map to Environment Sustainability	2320-8767

### Books

Sr No.	Title with page numbers	Type of Authership	ISBN number	Author
1.	Recent Trends in Agriculture , Environment, Sustainability and Life Sciences		978-81- 8914-059-5	Dr. Madhulakshmi Sharma & Dr. Preeti Kulshrestha
2.	Bharat mein Naariwadi Andolan ka samkalin Swaroop: Chunotiya evam Sambhavnaye		978-93- 86439-63-5	Dr. Anupam Gupta
3.	History of the Mahatma Ghadhi Individual Satyagraha Movement		978-93- 86955-17-3	Dr. Sharda sharan



कार्यालय प्राचार्य, शासकीय कमलाराजा कन्या स्नातकोत्तर स्वशासी महाविद्यालय, ग्वालियर  
**GOVT. KAMLA RAJA GIRLS P.G. AUTO. COLLEGE, GWALIOR (M.P.) INDIA**  
(Affiliated to Jiwaji University, Gwalior under 2(f) & 12(b) NAAC – 'A' Grade Accredited Institute)  
[www.krgcgwalior.org](http://www.krgcgwalior.org) [krgc@rediffmail.com](mailto:krgc@rediffmail.com) Phone: 0751- 2625495, 0751-2438173

4.	Kavya- Pushpanjali		978-93- 82077-77-0	Dr. Meena Shrivastava
5.	Multiple Narratives : Studies in Intra Cultural Textuality		978-81- 8435-577-2	Dr. Charu Chitra

### Chapters

S. No.	Title of the Book	Title of Chapter Edited	ISBN No.	Author
1.	Bharat mein Naariwadi Andolan ka samkalin Swaroop: Chunotiya evam Sambhavnaye	Bharat mein Naariwadi Andolan ka samkalin Swaroop: Chunotiya evam Sambhavnaye	978-93-86439- 63-5	Dr. Anupam Gupta
2.	Sanskrit vadyamay Chintan	Murari ke anargh raghvam naatak me adhbhoot ras vivechan	978-93-89386- 04-02	Dr. Asha Singh Rawat
3.	Sanskrit vadyamay Chintan	shri mad Bagwat ke samwado main varnar bhakti ka mahatv	978-93-89386- 04-02	Dr. Asha Singh Rawat



**कार्यालय प्राचार्य, शासकीय कमलाराजा कन्या स्नातकोत्तर स्वशासी महाविद्यालय, ग्वालियर**  
**GOVT. KAMLA RAJA GIRLS P.G. AUTO. COLLEGE, GWALIOR (M.P.) INDIA**

(Affiliated to Jiwaji University, Gwalior under 2(f) & 12(b) NAAC – 'A' Grade Accredited Institute)

[www.krgcgwalior.org](http://www.krgcgwalior.org) [krgc@rediffmail.com](mailto:krgc@rediffmail.com) Phone: 0751- 2625495, 0751-2438173

4.	Identity Diaspora and Literature; Theorising New Diasporic Consciousness Editors: Nitesh Narnolia and Mousam Author Press 2018 Pg. no 167- 176	Recreated Homelands: A way from Home	978-89387- 7281-6-53	Dr. Charu Chitra
5.	Bharat mein Naariwadi Andolan ka samkalin Swaroop: Chunotiya evam Sambhavnaye	Bheeshma Sahni ke Sahitya mein Naari Chitran	978-93-86439- 63-5	Dr. Kalpana Sharma
6.	(Art Family 17) Talking WALLS	Edited and Completed by S.A. Jafar	978-93-87922- 58-7	Dr. Kumkum Mathur
7.	(Art Family 15) Golden Glow	Edited and Completed by S.A. Jafar	978-93-84404- 08-6	Dr. Kumkum Mathur
8.	Bhartiya Rashtrawad: Swaroop evam Vikaas	Rashtra ke prati nishthawan: Smt. Krishna Rai Chaudhary	978-81- 939871-5-5	Dr. Kumkum Mathur
9.	Bharat mein Naariwadi Andolan	Bhartiya Ithihaas ki Veernagana Rani	978-93-86439- 63-5	Dr. Madhubala Kulshreshtha



	ka samkalin Swaroop: Chunotiya evam Sambhavnaye	Durgawati		
10.	Bharat mein Naariwadi Andolan ka samkalin Swaroop: Chunotiya evam Sambhavnaye	Bhartiya Naari Mukti Aandolan- Dasha aur Disha	978-93-86439- 63-5	Dr. Namita Tripathi
11.	Indigenous Knowledge and culture: Role Conservation of Biodiversity	Recent Trends in Agriculture, Environment Sustainability And life Sciences	978-818914- 059-5	Dr preeti Kulshrestha
12.	Bharat mein Naariwadi Andolan ka samkalin Swaroop: Chunotiya evam Sambhavnaye	Garibi me Stree ki Stree Garibi	978-93-86439- 63-5	Dr. Shishir Kashyap
13.	Bharat mein Naariwadi Andolan ka samkalin Swaroop: Chunotiya evam Sambhavnaye	Stree Vimarsh Ling Bheid ke Paripreksh mein	978-93-86439- 63-5	Dr. Sudha Singh
14.	Bharat mein	Stree Vimarsh Ling	978-93-86439-	Dr. Bharti Shukla



	Naariwadi Andolan ka samkalin Swaroop: Chunotiya evam Sambhavnaye	Bheid ke Paripreksh mein	63-5	
15.	Trends and Issues in Global Business Management vand Humanities	A study of Human Resource Practices Towards Tourism Industry in Madhya Pradesh	978-93-86439- 40-6	Dr. Vipin Bansal,
16.	Trends and Issues in Global Business Management vand Humanities	A study of Human Resource Practices Towards Tourism Industry in Madhya Pradesh	978-93-86439- 40-6	Dr. V.K. Agrawal
17.	Trends and Issues in Global Business Management vand Humanities	A study of Human Resource Practices Towards Tourism Industry in Madhya Pradesh	978-93-86439- 40-6	Dr. P.K. Bansal
18.	Bharat mein Naariwadi Andolan ka samkalin Swaroop: Chunotiya evam Sambhavnaye	Bhagwati Charan Verma ke Upanyaso mein Naari Chitran	978-93-86439- 63-5	Dr. Sudha Kushwah
19.	Patel : Political Ideas and Policies	Vallabhbhai Patel and Idea of	978-93-528- 0853-3	Dr. Dinesh Kumar Singh



	(ed.) by Shakti Sinha and Himanshu Roy	Nationalism”,(pp-1- 24)		
--	--	----------------------------	--	--

**Participation in workshops/ Seminars/ conferences (national/ international)**

<b>International Conference</b>	<b>23</b>
<b>International Seminar</b>	<b>30</b>
<b>National Conference</b>	<b>105</b>
<b>National Seminar</b>	<b>125</b>
<b>State Workshop</b>	<b>13</b>
<b>State Seminar</b>	<b>6</b>

**Paper Presentation:**

<b>Sr No.</b>	<b>Name</b>	<b>Title of the paper presented</b>	<b>Title of Conference / Seminar</b>	<b>Organized by</b>	<b>Conference Level</b>
01	Dr. Jaya Jain	Chitrakala me rasoi ki bhoomika ek vive chana	Paramparik Thumri Ek Lokranjak Gayiki- Ek Sameeksha	Govt. Madhav sangeet mahavidhyalaya Gwalior	National
02	Dr. Jaya Jain	Sahitya Evam chirakala ki anantha	Sahitya avam chitrakala	SRJG Govt PG college Neemach MP	National





**कार्यालय प्राचार्य, शासकीय कमलाराजा कन्या स्नातकोत्तर स्वशासी महाविद्यालय, ग्वालियर**  
**GOVT. KAMLA RAJA GIRLS P.G. AUTO. COLLEGE, GWALIOR (M.P.) INDIA**  
*(Affiliated to Jiwaji University, Gwalior under 2(f) & 12(b) NAAC – 'A' Grade Accredited Institute)*  
**www.krgcgwalior.org krgc@rediffmail.com Phone: 0751- 2625495, 0751-2438173**

		sambandh ko darshati sachitra jain pandulipi			
03	Dr. Jaya Jain	Bhartiya swatantrata andolan ke anjane senani	Aupniveshik bharat aur bhartiya pratikar	Govt. KRG PG College Gwalior	National
04	Dr. Jaya Jain	Jain Tirthankar ke kevalya vraksho ka vartman pariyavaran me mahatva	Current environmental issues and sustainable development	Govt. KRG PG College Gwalior	College
05	Dr. Sunita Sharma	Management of Kitchen Waste to Control Environment Pollution	Current environmental issues and sustainable development	Govt. KRG PG College Gwalior	College
06	Dr. Kumkum Mathur	Dharmik Swatranta ka adhikar radhasoami mat ke vishesh sanderbh main	Dharmik Swatranta ka adhikar	Jiwaji University Gwalior	National



**कार्यालय प्राचार्य, शासकीय कमलाराजा कन्या स्नातकोत्तर स्वशासी महाविद्यालय, ग्वालियर**  
**GOVT. KAMLA RAJA GIRLS P.G. AUTO. COLLEGE, GWALIOR (M.P.) INDIA**

(Affiliated to Jiwaji University, Gwalior under 2(f) & 12(b) NAAC – 'A' Grade Accredited Institute)

[www.krgcgwalior.org](http://www.krgcgwalior.org) [krgc@rediffmail.com](mailto:krgc@rediffmail.com) Phone: 0751- 2625495, 0751-2438173

07	Dr. Kumkum Mathur	Laghu avam bhitti chitrakano main saangeetik prabhava		Govt. Madhav sangeet mahavidyalaya Gwalior	National
08	Dr. Kumkum Mathur	Bhartiya sahitya main ullekhit vividh chitrakan paksh		Govt. Sitaram jaju girls college Neemuch MP	National
09	Dr. Kumkum Mathur	Aupniveshik bharat aur bhartiya chitrakaaron ka pratikar		Govt. KRG College Gwalior MP	National
10	Dr. Kumkum Mathur	Vismrit hoti bhartiya paremparik chitra shailiyan	MP Itihas parishad 37th Adhiveshan	Govt. M.K.B. College Jabalpur	National
11	Dr. Kumkum Mathur	Bhartiya laghu chitra shailiyon main abhivyakt kalatmak pariyavaran	Current environmental issues and sustainable development	Govt. K.R.G.P.G. College Gwalior	National



**कार्यालय प्राचार्य, शासकीय कमलाराजा कन्या स्नातकोत्तर स्वशासी महाविद्यालय, ग्वालियर**  
**GOVT. KAMLA RAJA GIRLS P.G. AUTO. COLLEGE, GWALIOR (M.P.) INDIA**  
*(Affiliated to Jiwaji University, Gwalior under 2(f) & 12(b) NAAC – 'A' Grade Accredited Institute)*  
**www.krgcgwalior.org krgc@rediffmail.com Phone: 0751- 2625495, 0751-2438173**

12	Dr. Meera Mittal	Jalvaayu Parivartan ka Bhartiya Krishi pad Prabhav	Paryavaran chetra avam sahitya	Govt. Kasturva Girls College Guna	National
13	Dr. Meera Mittal	29 Annual Conference of Madhya Pradesh Economic Association	Digitalization of Indian economy	Rani durgawati university Jabalpur	National
14	Dr. Anju Yadav	Growth and environment degradation	Paryavaran chetna avam sahitya	Shaskiya Kasturva kanya college guna	National
15	Dr. Anju Yadav	IT and Indian economy	Digitalization of Indian economy	SOS rani durgawati college jabalpur	National
16	Dr. Anju Yadav	Global warming and its impact on agricultural development	Current environmental Issues and sustainable development	Govt. kRG PG College Gwalior	National
17	Dr. Nisha Mishra	Paryavaran Sanrakshan evam Sarkar ki Nitiyo ka Mulyankan	Paryavaran Chetna evam Sahitya	Govt. Kasturva Girls College Guna (MP)	National



**कार्यालय प्राचार्य, शासकीय कमलाराजा कन्या स्नातकोत्तर स्वशासी महाविद्यालय, ग्वालियर**  
**GOVT. KAMLA RAJA GIRLS P.G. AUTO. COLLEGE, GWALIOR (M.P.) INDIA**  
*(Affiliated to Jiwaji University, Gwalior under 2(f) & 12(b) NAAC – 'A' Grade Accredited Institute)*  
**www.krgcgwalior.org krgc@rediffmail.com Phone: 0751- 2625495, 0751-2438173**

18	Dr. Preti bala shrivastav	Social and cultural issues and sustainable development	Recent trends in agriculture Biodiversity and social sustainability ABSS 2018	BSI- CRC Allahabad.  Govt. P.G collage Allahabad.	International Symposium
19	Dr. Beena Lad	A study of environmental issues in Amitav Ghosh	Recent trends in agriculture Biodiversity and social sustainability	Blue planed, Allahabad	International
20	Dr. Beena Lad	Impact of English language over youth	Effective strategies for new indies	MCNO. Bhopal	National
21	Dr. Beena Lad	Post Truth phen in India	Debating the post truth Phen in Literature	DAVPG collages Varanasi	International
22	Dr. Beena Lad	Role of good communication skills in transition	Lit in translation		National
23	Dr. Beena Lad	Management of sustainable development	Technology innovative management	ITM University Gwalior	International



**कार्यालय प्राचार्य, शासकीय कमलाराजा कन्या स्नातकोत्तर स्वशासी महाविद्यालय, ग्वालियर**  
**GOVT. KAMLA RAJA GIRLS P.G. AUTO. COLLEGE, GWALIOR (M.P.) INDIA**  
*(Affiliated to Jiwaji University, Gwalior under 2(f) & 12(b) NAAC – 'A' Grade Accredited Institute)*  
**www.krgcgwalior.org krgc@rediffmail.com Phone: 0751- 2625495, 0751-2438173**

24	Dr. Shailendra singh Tomar	Krishi mein Nav Pravartan ka Samajik Aarthik Prabhav	Social Science Research and its utility in society and state system	Sos in Political Science J.U.Gwalior	National
25	Dr. Shailendra	Primary and secondary data	Workshop on research	Geography dept. Ambah PG.	National
26	Dr. Shailendra singh Tomar	Naveen Shiksha Paddhathi evam Rojgaar	The role of ancient and modern education and its impact in present scenario	BVM college Gwalior	National
27	Dr. Shailendra singh Tomar	Women education in chambhal division	Women Empowerment and higher education	Govt. Girls college morena MP	National
28	Dr. Shailendra singh Tomar	Jalvaayu parivartan evam Paristhitik Chunotiya	Environmental stresses and ecological challenges	Shri krishna university chhatarpur MP	International
29	Dr. Shailendra singh Tomar	Climatic Changes: Causes impact and Remedial Measures	Current environmental issues and sustainable development	Govt. KRG PG College Gwalior	University



**कार्यालय प्राचार्य, शासकीय कमलाराजा कन्या स्नातकोत्तर स्वशासी महाविद्यालय, ग्वालियर**  
**GOVT. KAMLA RAJA GIRLS P.G. AUTO. COLLEGE, GWALIOR (M.P.) INDIA**  
*(Affiliated to Jiwaji University, Gwalior under 2(f) & 12(b) NAAC – 'A' Grade Accredited Institute)*  
**www.krgcgwalior.org krgc@rediffmail.com Phone: 0751- 2625495, 0751-2438173**

30	Dr. Abha Varshney	Samajik Vigyano mein Shodh ka Samaaj par Prabhav: Paryavaraniya Shodh ke Vishesh Sandharbh mein	Social Science Research and its utility and society and state system	Shanti vikas aur sanskritik ekata parishad jiwaji university gwalior	National
31	Dr. Abha Varshney	Shiksha ka Mahila sashaktikaran par prabhav: Gwalior Nagar ke Vibhesh Sandarbh mein	The role of ancient and modern education and its impact in present scenario	BVM college of management and education Gwalior	National
32	Dr. Abha Varshney	Arthik Aatmanirbhar tatha Mahila sashaktikaran: Gwalior Nagar ke Vishesh Sandharbh mein	Women Empowerment and higher education	Govt. Girls college morena MP	National
33	Dr. Abha Varshney	Jalvaayu parivartan evam Paristhitik Chunotiya	Environmental stresses and ecological challenges	Shri Krishna University Chhatarpur	International



34	Dr. Abha Varshney	Increasing air pollution and its impact on human health with special reference to Gwalior city	Current environmental issues and sustainable development	Govt. KRG PG College Gwalior	University
35	Dr. Abha Varshney	Aupniveshik Vikaas aur Bhartiya sansadhano ka dohan	Aupniveshik Bharat aur Bhartiya Pratikar	Govt.KRG College Gwalior	National
36	Dr. Ela Shukla	Paryavaraniya Chetna ke Vikaas mein Sahitya ka Yogdaan	Current Environmental Issues & Sustainable Development	Govt.KRG College Gwalior	National
37	Dr. Abha Mishra	Maithilisharan Gupt ke Kavy mein Bhasha Soundarya	Mahakavyatmak Pratibha Maithilisharan Gupt	Bundelkhand University Jhansi	National
38	Dr. Abha Mishra	Aupniveshik Bharat aur Hindi Sahitya	Aupniveshik Bharat aur Bhartiya Pratikar	Govt.KRG College Gwalior	National



**कार्यालय प्राचार्य, शासकीय कमलाराजा कन्या स्नातकोत्तर स्वशासी महाविद्यालय, ग्वालियर**  
**GOVT. KAMLA RAJA GIRLS P.G. AUTO. COLLEGE, GWALIOR (M.P.) INDIA**  
*(Affiliated to Jiwaji University, Gwalior under 2(f) & 12(b) NAAC – 'A' Grade Accredited Institute)*  
**www.krgcgwalior.org krgc@rediffmail.com Phone: 0751- 2625495, 0751-2438173**

39	Dr. Abha Mishra	Paryavaraniya Chetna ke Vikaas mein Sahitya ka Yogdaan	Current Environmental Issues & Sustainable Development	Govt.KRG College Gwalior	National
40	Dr. Sudha Kushwah	Paryavaraniya Chetna ke Vikaas mein Sahitya ka Yogdaan	Current Environmental Issues & Sustainable Development	Govt.KRG College Gwalior	National
41	Dr. Madhubala Kulshrestha	Gandhi Vichaar Dhara se Utprerit Kandel Nahar Satyagraha	Aupniveshik Bharat aur Bhartiya Pratikar	Govt. K.R.G P.G Auto norms Collage Gwalior (M.P.)	National
42	Dr. Madhubala Kulshrestha	Gandhi Yugin Rashtrawad aur Madhya prant ki Hindi patrakarita Varsh 1921-22 ke Sandharbh mein	British Kaal mein Jan Andolan evam agrezo ka Daman Chakra	Govt. Maankuwar Bai Kalaa evam Vanijya Swasashi Mahila College Jabalpur	National
43	Dr. Madhubala Kulshrestha	Paryavaraniya Sanrakshan aur Nagriki Dayitv	Current Environmental issues and sustainable development	Govt. K.R.G P.G Autonomous Collage Gwalior (M.P.)	National





**कार्यालय प्राचार्य, शासकीय कमलाराजा कन्या स्नातकोत्तर स्वशासी महाविद्यालय, ग्वालियर**  
**GOVT. KAMLA RAJA GIRLS P.G. AUTO. COLLEGE, GWALIOR (M.P.) INDIA**  
 (Affiliated to Jiwaji University, Gwalior under 2(f) & 12(b) NAAC – 'A' Grade Accredited Institute)  
[www.krgcgwalior.org](http://www.krgcgwalior.org) [krgc@rediffmail.com](mailto:krgc@rediffmail.com) Phone: 0751- 2625495, 0751-2438173

44	Dr. Smita Sahasrabudhe	Bhartiya Sangeet mein Shastriyata evam Parampara Geet Shailiyo ke Sandarbh mein		Govt. Madhav Music college & cultural Deptt M.P.	National
45	Dr. Smita Sahasrabudhe	Upniveshbad mein Sangeet aur Sahitya ki Bhoomika	Aupniveshik Bharat aur Bhartiya Pratikar Bhartiya	Govt. KRG PG Auto. College	National
46	Dr. Anoop Moghe	Bhartiya Sangeet ki Geet Shaili Khyaal- Ek Naveen Prayog	Bhartiya Sangeet ki Geet Shaili Khyaal- Ek Naveen Prayog	Govt. Madhav Music College Gwalior	National
47	Dr. Swapna Marathe	Paramparik Thumri Ek Lokranjak Gayiki- Ek Sameeksha	Paramparik Thumri Ek Lokranjak Gayiki- Ek Sameeksha	Govt. Madhav Music College Gwalior	National
48	Dr. Kavita Agrawal	Paryavaran Chetna evam Chintan Manan (Samajik Pariprekshya mein)	Paryavaran Sahitya evam Chetna	Govt. Kasturba Girls College Guna	<b>National</b>



**कार्यालय प्राचार्य, शासकीय कमलाराजा कन्या स्नातकोत्तर स्वशासी महाविद्यालय, ग्वालियर**  
**GOVT. KAMLA RAJA GIRLS P.G. AUTO. COLLEGE, GWALIOR (M.P.) INDIA**  
*(Affiliated to Jiwaji University, Gwalior under 2(f) & 12(b) NAAC – 'A' Grade Accredited Institute)*  
**www.krgcgwalior.org krgc@rediffmail.com Phone: 0751- 2625495, 0751-2438173**

49	Dr. Kavita Agrawal	Environmental Development		Govt. KRG PG college Gwalior	<b>Memorial Lecture</b>
50	Dr. Sudha Singh	Paryavaraniya Sankat evam Vishleshan	Paryavaran Sahitya evam Chetna	Govt. Kasturba Girls College Guna	<b>National</b>
51	Dr. Sudha Singh	Nehru aur Bharat ka Swatantrata Sangharsh	Nehru aur Bharat ki Sankalpana	Govt. K.R.G Collage Gwalior	<b>National</b>
52	Dr. Dinesh Kumar Singh	Idea of Violence and non-Violence in Indian religious and philosophical traditions	Indic Thought : Exploring The Indianness	Indian council of Social Science Research (ICSSR) Sponsored and organized by department of political Science Goa University Goa	<b>National</b>
53	Dr. Dinesh Kumar Singh	Higher Education and research	Orientation program from 01-03-2019 to 28-03-2019	Lakshmibai National Institute of physical education Gwalior	<b>National</b>



कार्यालय प्राचार्य, शासकीय कमलाराजा कन्या स्नातकोत्तर स्वशासी महाविद्यालय, ग्वालियर  
**GOVT. KAMLA RAJA GIRLS P.G. AUTO. COLLEGE, GWALIOR (M.P.) INDIA**  
(Affiliated to Jiwaji University, Gwalior under 2(f) & 12(b) NAAC – 'A' Grade Accredited Institute)  
[www.krgcgwalior.org](http://www.krgcgwalior.org) [krgc@rediffmail.com](mailto:krgc@rediffmail.com) Phone: 0751- 2625495, 0751-2438173

54	Dr. Dinesh Kumar Singh	Politics of environment	Paryavaran Chetna evam Sahitya	Govt. Kasturba Girls College, Guna	National
55	Dr. Dinesh Kumar Singh	Bharat Mein Loktantra	Bahumatatawad aur Loktantra	People research Society Bhopal	<b>National</b>
56	Dr. Krishna Jain	Bhartiya Pariprekshya mein Naari Vimarsh	Sanbhagiya Mahila Sahityakar Sammelan	Madhya Bhartiya Hindi Sahitya Sabha	National
57	Dr. Krishna Jain	Malti Madhav mein Varnit Paryavaraniya Tatv	Bhavbhooti Samaroh 2019	Jiwaji University Gwalior	National
58	Dr Asha Singh Rawat	Aupniveshik Bharat mein Likhit shivraj Vijayam mein Varnit Lok Jeewan evam Sanskriti	Aupniveshik Bharat aur Bhartitya Sarokaar	Govt. KRG PG College Gwalior	National
59	Dr Asha Singh Rawat	Sanskrit Vadmaya me moksh purusharth sambandhi	Sanskrit Vadmaya me moksh purusharth sambandhi bhartiya	Rajasthan University, Jaipur	National



		bhartiya chintan ki awdharna	chintan ki awdharna		
60	Dr Asha Singh Rawat	Bavbhatt ki Kadambari mein Paryavaran	Contemporary India: Prospects, Challenges and Responses	Govt. Arts Girls College, Kota (Rajasthan)	International
61	Dr. Archana Kushwah	Samaaj mein Samajik Anusandhaan ki Upyogita	Social Science and its utility in society and state system	Jiwaji University Gwalior	<b>National</b>
62	Dr. Archana Kushwah	Mahilayo ki Samajik Sthiti- Samaaj Shastriya Vivechan	Aupniveshik Bharat aur Bhartiya Pratikar	Govt. K.R.G Collage Gwalior	<b>National</b>
63	Dr. Archana Kushwah	Society & Environment	Current environmental issues and sustainable development	Govt. K.R.G Collage Gwl.	<b>Symposium</b>
64	Dr. A.K. Gupta	Aupniveshik Bharat aur Bhartiya Pratikar	Aupniveshik Bharat aur Bhartiya Pratikar	Govt. KRG College Gwalior	National



65	Dr. H.K. Agrawal	Session Chaired	Strategies fostering growth and development	Prestige Institute of management Gwalior	National
66	Dr. Charu Katare	Utilization of Agricultural waste	Technology Innovation and Management for Sustainable Development	ITM University Gwalior	International
67	Dr. Charu Katare	Madhya Pradesh mein Aupniveshik Kaal me Angrezo ke viruddh pratikar	Aupniveshak Bharat aur bhartiya Pratikar	Govt.K.R.G.PG Auto.College Gwalior	National
68	Dr. Preeti Kulshrestha	Medicinal plant used for Treatment of Digestive Disorders	5 <sup>th</sup> international virtual conference ISCA/ IVS2018	ISCA	International
69	Dr. Preeti Kulshrestha	Plant used the Treatment of lever disorders” : A review	International symposium ABSS 2018	BSI Auditorium Allahabad	International



70	Dr. Preeti Kulshrestha	Traditional Medicinal Plant used for rural Communities of Dabra Tehsil District Gwalior	XII All India Botanical Conference of the IBS	Jiwaji University Gwalior	National
71	Dr. Preeti Kulshrestha	Conservation of Plant biodiversity in India With reference to socio religious parctious rituals	5 <sup>th</sup> international Conference on environment and ecology	Christ Collage Pune	International
72	Dr. Preeti Kulshrestha	Medicinal Plants used of the treatment of gynaecological disorders by rural pupolationion Madhya Pradesh	Global Conference our Biodiversity our food & our health	Blue plants Society prayagraj BSI Auditorium Allahabad	International
73	Dr. Preeti Kulshrestha	Use of medicinal plants in traditional herval medicines	Indo global multidisciplinary educational conference 2019	Bangkok Thailand	International
74	Dr. Kiran Burman	Air Pollution in Gwalior city	Current environmental issues and	Govt. K.R.G Collage Gwalior	<b>College</b>



			sustainable development		
75	Dr. Pratima Jain	Bio surfactants : A Wonderful cleaning Agent for Motor Spills	International Conference on technology innovation and management for Sustainable Development	ITM University Gwalior	International
76	Dr. Arvind kumar yadav	5 <sup>th</sup> National conference the role of ancient and modern education & its impact in scenario	The impact of modern education in society		National
77	Dr.Arvind kumar yadav	National symposium women empowerment & higher education	A case study today of woman empowerment in higher education in M.P		National



# कार्यालय प्राचार्य, शासकीय कमलाराजा कन्या स्नातकोत्तर स्वशासी महाविद्यालय, ग्वालियर GOVT. KAMLA RAJA GIRLS P.G. AUTO. COLLEGE, GWALIOR (M.P.) INDIA

(Affiliated to Jiwaji University, Gwalior under 2(f) & 12(b) NAAC – 'A' Grade Accredited Institute)

www.krgcgwalior.org krgc@rediffmail.com Phone: 0751- 2625495, 0751-2438173

78	Dr. Meenal gokhale	Bhartiya Pratikar aur Mahilaye aur Mahilayon ka Yogdaan	Aupniveshik Bharat aur Bhartiya Pratikar	Govt. K.R.G Collage Gwalior	National
79	Dr. Meenal gokhale	Social responsibility A Road map to environment sustainability	Human Capital challenges for organization in Current Scenario	B.V.M. Collage Gwalior	National
80	Dr. Sukriti Ghosh	Social Responsibility- A road map to Environment Sustainability	Human capital Challenges for organization in current scenario	B V M Collage of management and Education, Gwalior	National
81	Dr. Sukriti Ghosh	Bharat mein Lok, jeewan Vigyaan or Sanskriti	Aupniveshik Bharat aur Bhartiya Pratikar	Govt K R G Collage Gwalior	National
82	Dr. Sukriti Ghosh	Thermodynamics Properties of some transition metal based alloys	Current environment issues & sustainable development	Govt. K.R.G Collage Gwalior	<b>Collage</b>





**कार्यालय प्राचार्य, शासकीय कमलाराजा कन्या स्नातकोत्तर स्वशासी महाविद्यालय, ग्वालियर**  
**GOVT. KAMLA RAJA GIRLS P.G. AUTO. COLLEGE, GWALIOR (M.P.) INDIA**  
*(Affiliated to Jiwaji University, Gwalior under 2(f) & 12(b) NAAC – 'A' Grade Accredited Institute)*  
**www.krgcgwalior.org krgc@rediffmail.com Phone: 0751- 2625495, 0751-2438173**

83	Dr. Sukriti Ghosh	Thermodynamic properties of some metal based alloys	Environmental Issues	Govt. K R G Collage Gwalior	National
84	Dr. Sudama Kokate	Gadolinium doped UVB emitting perovksite barium zirconate phosphor	5 <sup>th</sup> International Conference on Advance in Engineering, Pharmaceutical and Applied Sciences	SIRT College Bhopal India	International
85	Dr. Sukriti Ghosh	Properties of Uo2 IvIn	Spectroscopy	Jiwaji University	International
86	Dr. Archana Dubey	Management of medical waste	Recent trends in Agriculture Biodiversity and Socials Sustainability	Blue planet society, Botanical survey of India CRC Allahabad	<b>International</b>
87	Dr. Archana Dubey	Radiation and Bio technology	Recent trends in plant Biotechnology and Bio prospecting	VISM college Gwalior	<b>National</b>
88	Dr. Archana Dubey	How much “wild life tourism affect animals “	Smart Tourism Smart Destination and limits of being traveler or	IITTM Gwalior	<b>International</b>



89	Dr. Archana Dubey	Environmental pollution & its effects	Current environment issues & sustainable development	Govt. K.R.G Collage Gwalior	Collage
90	Dr. Mohit Arya	Natural recourses depletion and sustainable development	Current Environmental Issue and Sustainable Development	Govt. K.R.G.P.G. (Autonomous) College, Gwalior, (M.P.)	College level
91	Dr. Mohit Arya	Fundamentals of Instrumental analysis and Demonstration on HPLC & LCMS	Dr. A.P.J. Abdul Kalam Central Instrumental Facility	Jiwaji University Gwalior	College level
92	Dr. Mohit Arya	Population status, Habitat distribution and Conservation problems of Marsh crocodile ( <i>Crocodylus palustris</i> ) in Jadhav Sagar	Our Biodiversity, Our Food and Our Health	Blue Planet Society, Prayagraj (U.P.) and Botanical Survey of India, Prayagraj (U.P.)	International "Global Conference"



		Lake, Shivpuri, Madhya Pradesh, India.			
93	Dr. Aparna Singh	Environmental pollution and its impact	Current Environmental Issues and Sustainable Development	Govt.KRG College Gwalior	National
94	Dr. Naseem Khan	Deforestation & its impact on Climate	Current Environmental Issues and Sustainable Development (Lecture series cum symposium)	Govt.KRG College Gwalior	National
95	Dr. Rashmi Choudhary	Stree Sashaktikaraneva m Stree Shiksha	5th national conference on "The role of ancient and modern education and its impact in present scenario	B V M college of management education Gwalior	<b>National</b>



**कार्यालय प्राचार्य, शासकीय कमलाराजा कन्या स्नातकोत्तर स्वशासी महाविद्यालय, ग्वालियर**  
**GOVT. KAMLA RAJA GIRLS P.G. AUTO. COLLEGE, GWALIOR (M.P.) INDIA**  
*(Affiliated to Jiwaji University, Gwalior under 2(f) & 12(b) NAAC – 'A' Grade Accredited Institute)*  
**www.krgcgwalior.org krgc@rediffmail.com Phone: 0751- 2625495, 0751-2438173**

96	Dr. Arvind Kumar Yadav	The impact of modern education in Society	5 <sup>th</sup> National Conference the role of Ancient and modern education & its impact in scenario	BVM College of management Education, Gwalior MP	<b>National</b>
97	Dr. Harpal Singh Chauhan	A role of Mathematics in Modern Education	5 <sup>th</sup> National Conference the role of Ancient and modern education & its impact in scenario	BVM College of management Education, Gwalior MP	<b>National</b>
98	Dr. Arvind Kumar Yadav	A case study of Woman empowerment in Higher education	National symposium women empowerment & Higher Education in M.P.		<b>National</b>
99	Dr. Archana Dubey	Paryavaran Avanayan evam uske Dushprabhav	Paryavaran Chetna evam Sahitya	Govt. Kasturba Girls College Gwalior	National
100	Dr. Archana Dubey	Problems of digitalization in	Digitalization of Indian economy	Rani Durgawati university, Jabalpur	National



**कार्यालय प्राचार्य, शासकीय कमलाराजा कन्या स्नातकोत्तर स्वशासी महाविद्यालय, ग्वालियर**  
**GOVT. KAMLA RAJA GIRLS P.G. AUTO. COLLEGE, GWALIOR (M.P.) INDIA**  
 (Affiliated to Jiwaji University, Gwalior under 2(f) & 12(b) NAAC – 'A' Grade Accredited Institute)  
[www.krgcgwalior.org](http://www.krgcgwalior.org) [krgc@rediffmail.com](mailto:krgc@rediffmail.com) Phone: 0751- 2625495, 0751-2438173

		india			
101	Dr. Archana Dubey	Biomedical waste management	Current environmental Issues and sustainable development	Govt KRG PG College Gwalior	National
102	Dr. Anita Singh	Women and child rights contemporary challenges in 25 <sup>th</sup> Century	Role of Law Republic India	Prestige Institute of Management	National
103	Dr. Mukulita Upadhyay	Plastic Pollution – A threat to Ecosystem	Current Environmental issues & Environmental development (Lecture series cum symposium)	Govt. K.R.G. College Gwalior	National
104	Dr. Charu Chitra	<i>Study of Ecological Problems in Arundhati Roy's Novel The God of Small Things</i>	International Symposium on Recent Trends in Agriculture Biodiversity and Social Sustainability (	Jointly Organized by Blue Planet Society Allahabad, Botanical Survey of India, CRC, India, Govt. P.G. College Said bad-	International



**कार्यालय प्राचार्य, शासकीय कमलाराजा कन्या स्नातकोत्तर स्वशासी महाविद्यालय, ग्वालियर**  
**GOVT. KAMLA RAJA GIRLS P.G. AUTO. COLLEGE, GWALIOR (M.P.) INDIA**

(Affiliated to Jiwaji University, Gwalior under 2(f) & 12(b) NAAC – 'A' Grade Accredited Institute)

[www.krgcgwalior.org](http://www.krgcgwalior.org) [krgc@rediffmail.com](mailto:krgc@rediffmail.com) Phone: 0751- 2625495, 0751-2438173

			ABSS 2018)	Allahabad, International Academy of Science and Research, Kolkata in Collaboration with Confederation of Indian Universities, New Delhi	
105	Dr. Sanjay Swarnkar	DIFFERENCES BETWEEN SARDAR PATEL AND NEHRU ON INDO-CHINA RELATION	SARDAR VALLABHBHAI PATEL AND INDIAN POLITICS	DHARAMPAL SHODHPEETH, DIRECTORATE OF SWARAJ SANSTHAN, BHOPAL	National
106	Dr. Sanjay Swarnkar	UTTAR MADHYAKALI N BHARAT MEIN VIDESHI AKRAMAN AVAM BHARTIYA PRATIKAR	MADHYAWARTI BHARAT : NAYE AAYAM (ITIHAS SANSKRITI AVAM JANJATIYA PARAMPARAYE N)	FAZILI URDU LITERARY AND WELFARE SOCIETY BURHANPUR M.P.	National



107	Dr. Sanjay Swarnkar	Difference between Sardar Patel and Nehru on Seno- Indian Relations	NATIONAL INTEGRITY & SARDAR VALLABHBAHI PATEL	K.J. SOMAIYA COLLEGE OF ARTS, COMMERCE AND SCIENCE, KOPARGAON, DIST. AHMEDNAGAR MAHARASHTRA	National
108	Dr. Veena Singh Sahani	Air Pollution in Gwalior City	Environmental Pollution and its Management	Govt. VSPG College Dabra, Gwalior	National
109	Dr. Veena Singh Sahani	Application of Spectroscopy in Organic Chemistry	Role of Spectroscopy in Chemical Sciences	Jiwaji University Gwalior	Internatio nal
110	Dr. Veena Singh Sahani	Synthesis Characterization – Against Human Pothogens	Recent Trends in Chemical Sciences	Jiwaji University Gwalior	Internatio nal
111	Dr. Vinita Agrawal	Benefits of Naturopathy- Home Remedies	Recent Trends in Chemical Sciences	Jiwaji University Gwalior	Internatio nal
112	Dr. N.K. Gautam	Mathematical Analysis of environmental	Environmental Pollution and	Govt. VSPG College Dabra,	National



		Pollution	its Management	Gwalior	
113	Dr. Sadhna Pandey	Urban Ecosystem: Biodiversity A Concern	Ecological Restoration Carbon sequestration and Biotechnological Approach for Biodiversity Conservation	Jiwaji University Gwalior	National
114	Dr. Lata Mishra	Environment Apocalyptic Fiction: A Study	4 <sup>th</sup> International Film Fest “Lives Unmapped: Representation of the Refugee”	Little Flower College Guruvayoor	International
115	Dr. Lata Mishra	Nation as a Dialectic of Fact and Myth- A study of Fiction	Debating the Post-truth Phenomenon: Indian Literature, Culture and Critical Discourse	Jiwaji University Gwalior	International





116	Dr. Lata Mishra	Customary Sustainable use of Bio-Resources in contemporary African Fiction	Recent Trends in Agriculture Biodiversity and Social Sustainability (ABBS-2018)	Indian University New Delhi	International Symposium
117	Dr. S.K. Kashyap	International Politics in Environment	Paryavaran Chetna evam Sahitya	Govt. Kasturba Girls College, Guna	National
118	Dr. Atul Kumar Gupta	Paramparagat sangeet me naveen shikshan pranali (Sitaar, Violene ke Pariprekshya me)	Rashtriya Sanghoshthi	Govt. Madhav Music College Gwalior	National
119	Dr. Urmila Singh Tomar	Effective Management Policies by Chanakya: A Review	Human Capital Challenges for Organizations in Current Scenario	BVM College of Management and Education, Gwalior	National
120	Dr. Urmila Singh Tomar	Mahila Shiksha mein Savitri Bai Fule ka Yogdaan	Savitri Bai Fule aur Unka Yogdaan	Bhopal Kiran Samaaj Sewi Sanstha, Gwalior	National



**कार्यालय प्राचार्य, शासकीय कमलाराजा कन्या स्नातकोत्तर स्वशासी महाविद्यालय, ग्वालियर**  
**GOVT. KAMLA RAJA GIRLS P.G. AUTO. COLLEGE, GWALIOR (M.P.) INDIA**  
*(Affiliated to Jiwaji University, Gwalior under 2(f) & 12(b) NAAC – 'A' Grade Accredited Institute)*  
**www.krgcgwalior.org krgc@rediffmail.com Phone: 0751- 2625495, 0751-2438173**

121	Dr. Urmila Singh Tomar	Chayawadi Kavya me Paryavaran Chetna	Current environmental issues and sustainable development	Govt. KRG PG College Gwalior	College
122	Dr. Urmila Singh Tomar	Subhadra Kumari Chauhan ka Chhattisgarh Swatantrata Andolan me Yogdaan	Bhartiya Swadhinta Andolan ki Atihasik prishthbhumi- Chhattisgarh ke vishesh sandarbh me	Kirodimal Govt. Arts and Science College Raigarh	National
123	Dr. Urmila Singh Tomar	Adhunik Hindi Sahitya mein Aupniveshik Bharat aur Bhartiya Pratikar ke Swar	Aupniveshik bharat aur bhartiya pratikar	Govt. KRG PG College Gwalior	National
124	Dr. Urmila Singh Tomar	Bhartiya Samaaj me vraddhjano ki Bhumika	Bhartiya Samaaj mein Vraddhjan	Govt. Maankuwar Bai Arts and Commerce Autonomous College Jabalpur (MP)	National



**कार्यालय प्राचार्य, शासकीय कमलाराजा कन्या स्नातकोत्तर स्वशासी महाविद्यालय, ग्वालियर**  
**GOVT. KAMLA RAJA GIRLS P.G. AUTO. COLLEGE, GWALIOR (M.P.) INDIA**  
*(Affiliated to Jiwaji University, Gwalior under 2(f) & 12(b) NAAC – 'A' Grade Accredited Institute)*  
**www.krgcgwalior.org krgc@rediffmail.com Phone: 0751- 2625495, 0751-2438173**

125	Dr. Urmila Singh Tomar	New Age Economic Reforms in India 'Issues and Challenges'	New Age Economics Reforms in India 'Issue and Challenges'	BVM College of Management Education, Gwalior	National
126	Dr. Urmila Singh Tomar	Adiwasi Samajik Sanrachna mein Nyay Vyavastha	21 <sup>st</sup> Sadi bmein Adiwasi samaaj: Sahitya Lekhan ki Chunotiya aur Sambhavnaye	Indira Gandhi Rashtriya Janjatiya University, Amarkantak	National
127	Dr. Urmila Singh Tomar	Bhartiya Samaj me striyo ke dohare maapdand samajik vidhan: Kamiya or chunotiya	Contemporary Issues in Gender Equality	Madhav Vidhi College Affiliated by Jiwaji Univerity Gwalior	National
128	Dr. Urmila Singh Tomar	Vartmaan Paridrishya mein Shikshak evam Shiksha	Parivartit Samaaj me Adhyapak Shiksha	Bhartiya Vidhya Mandir College of Management education, Gwalior	National
129	Dr. Anand Kumar Singh	Hydrogen fuel is the safest and eco friendly fuel	Current environmental issues and sustainable development	Govt. KRG PG College Gwalior	College



130	Dr. K Ratnam	Madhyakaalin chunotiya aur sant parampara	Bharat me ubharti Dharmik or Samajik Chunotiya aur sant parampara	Bhartiya Itoihas sankalan Samiti Ujjain	National
131	Dr. K Ratnam	Pashchimi Himalaya chetra mein puratatvik strot	Exploring Archeology in Western Himalayas	ICHR , New Delhi`	National
132	Dr. K Ratnam	Shrimad Bhagwat Puran Kaalin ithihaas evam Sanskriti	Shrimad Bhagwat Purankaalin Itihas	Thakur Jagdev Chand Smriti Shodh Sansthan	National
133	Dr. Savita Shrivastava	Current environmental issues and sustainable development	Current environmental issues and sustainable development	Govt. KRG PG College Gwalior	College
134	Dr. Madhu Laxmi Sharma	Some Plants in Diabetes: A Survey report	5 <sup>th</sup> International Conference on Environment and Ecology	Christ College, Pune, Maharashtra	International
135	Dr. Madhu Laxmi Sharma	Women Empowerment and Higher Education	Women Empowerment and Higher Education	Dept. of Higher Education Bhopal	National



**कार्यालय प्राचार्य, शासकीय कमलाराजा कन्या स्नातकोत्तर स्वशासी महाविद्यालय, ग्वालियर**  
**GOVT. KAMLA RAJA GIRLS P.G. AUTO. COLLEGE, GWALIOR (M.P.) INDIA**  
*(Affiliated to Jiwaji University, Gwalior under 2(f) & 12(b) NAAC – 'A' Grade Accredited Institute)*  
**www.krgcgwalior.org krgc@rediffmail.com Phone: 0751- 2625495, 0751-2438173**

136	Dr. Madhu Laxmi Sharma	Current environmental issues with reference to current scenario	Current environmental issues and sustainable development	Govt. KRG PG College Gwalior	College
137	Dr. Madhu Laxmi Sharma	Natural Disaster- Development	Ecological Restoration, Carbon sequestration and Biotechnological Conservation	Jiwaji University, Gwalior	National
138	Dr. Madhu Laxmi Sharma	Paryawaraniya Chetna evam Prajatantra ka Aadhar Matdaan	Vyaktitv Vikaas Prakoshth	Govt. KRG PG College Gwalior	National
139	Dr. Madhu Laxmi Sharma	Development Activities, Environmental Development Degradation: and Sustainable Future	Science Technology and Society	Department of Sociology, Indore Christian College Indore	International
140	Dr. Madhu Laxmi Sharma	Aupniveshik Bharat aur Bhartiya Pratikar	Aupniveshik bharat aur bhartiya pratikar	Govt. KRG PG College Gwalior	National



141	Dr. Madhu Laxmi Sharma	Gender Equality	Contemporary Issues In Gender Equality	Madhav Vidhi College, Jiwaji University Gwalior	National
142	Dr. Madhu Laxmi Sharma	Ecological Imbalance: A threat to plant Diversity	2 <sup>nd</sup> World Clean Environment Summit	Science City Auditorium, Kolkata, West Bengal	National
143	Dr. Madhu Laxmi Sharma	Environmental Degradation: And Future Generation	Recent Trends in Agriculture Biodiversity and Social Sustainability	BSI Auditoriu, Allahabad, India	National

#### **Institutes Where Students Visit For Research**

- BIOPROCESS TECHNOLOGY DIVISION, DEFENSE RESEARCH AND DEVELOPMENT ESTABLISHMENT, GWALIOR
- DEPARTMENT OF BIOCHEMISTRY, REGIONAL AYURVEDIC RESEARCH INSTITUTE FOR DRUG DEVELOPMENT, GWALIOR
- DEPARTMENT OF PHARMACOLOGY, REGIONAL AYURVEDIC RESEARCH INSTITUTE FOR DRUG DEVELOPMENT, GWALIOR
- PLANT MOLECULAR BIOLOGY AND GENETIC ENGINEERING DIVISION, NATIONAL BOTANICAL RESEARCH GWALIOR
- DEPARTMENT OF BIOTECHNOLOGY, AMITY UNIVERSITY, GWALIOR
- DIVISION OF ENDOCRINOLOGY, CENTRAL DRUG RESEARCH CENTER (CDRI), LUCKNOW



- DEPARTMENT OF BIOTECHNOLOGY, VIJAYARAJE INSTITUTE OF SCIENCE AND MANAGEMENT , GWALIOR
- VECTOR MANAGEMENT DIVISION DEFENSE RESEARCH AND DEVELOPMENT ESTABLISHMENT, GWALIOR
- BIOPROCESS TECHNOLOGY DIVISION, DEFENSE RESEARCH AND DEVELOPMENT ESTABLISHMENT, GWALIOR
- DEPARTMENT OF BIOTECHNOLOGY, AMITY UNIVERSITY, GWALIOR
- PHARMACOGNOSY DIVISION, REGIONAL AYURVENDRA RESEARCH INSTITUTE FOR DRUG DEVELOPMENT, GWALIOR
- DIVISION OF MOLECULAR ONCOLOGY, NATIONAL INSTITUTE OF CANCER PREVENTION AND RESEARCH, NOIDA
- DEPARTMENT OF ANIMAL BIOTECHNOLOGY, JALMA INSTITUTE FOR LEPROSY AND OTHER MYCOBACTERIAL DISEASES, AGRA
- DEPARTMENT OF IMMUNOLOGY , JALMA INSTITUTE FOR LEPROSY AND OTHER MYCOBACTERIAL DISEASES, AGRA
- DIVISION OF PLANT PATHOLOGY, INDIAN COUNCIL OF AGRICULTURE RESEARCH, NEW DELHI
- DEPARTMENT OF DRUG DEVELOPMENT, REGIONAL AYURVENDRA RESEARCH INSTITUTE FOR DRUG DEVELOPMENT, GWALIOR
- DIVISION OF PLANT PATHOLOGY, INDIAN COUNCIL OF AGRICULTURE RESEARCH, NEW DELHI
- DEPARTMENT OF BIOTECHNOLOGY , AKS UNIVERSITY, SATNA
- BTTE DIVISION, DEFENSE RESEARCH AND DEVELOPMENT ESTABLISHMENT, GWALIOR
- DEPARTMENT OF BIOTECHNOLOGY , JIWAJI UNIVERSITY, GWALIOR

1. Defense Research & Development Establishment, Gwalior



2. Internship of BALLB Student under Renowned lawyers
3. Defense Research & Development Establishment, Gwalior
4. Bundelkhand University
5. Allahabad University

**Institutes Using College Laboratories :**

- Cancer Hospital And Research Institute, Gwalior
- Govt. V.R.G. PG Girls College, Morar, Gwalior
- College Publications: Research Journal, Magazine, Newsletter

**Publication of the International Peer Reviewed Multidisciplinary Triennial Journal by College *Creative Discourse* is in process**

- Publication of the News Letter *Srijan* is in process
- Intellectual Property Produced: NIL
- External Funding Received: External Funding for research is received by following agencies :

ICHR

UGC

- Research Agenda & Identify themes in Coming Year:
  - To integrate research with Community Extension Services so that awareness may be created on current Social and Health issues.
  - To conduct basic researches that will provide basis for developing new knowledge and applied researches that will provide contextualise prevailing knowledge in the different academic fields.





- To conduct research that will provide data and information for administrative policy making in quality assurance.

## Human Resources

Highlights senior faculty and administrative appointments. Describes what new areas of activity (new courses, research areas, extracurricular activities etc.) and administrative improvements are enabled by these appointments.

### 1. Faculty and Administrative appointments: Teaching and Non-teaching

Positions	Teaching Faculty			Non Teaching Faculty	Technical Staff
Sanctioned by UGC/ University/ State Govt	Prof 21	Assistant Prof 90	Guest Faculty	37	38
Filled	07	83	20	20	17

- Besides regular appointments Visiting Professors, Resource Persons and Administrative Officials contribute in various activities such as multidisciplinary Vocational and Skill based Short Term Certificate Courses governed by Ordinance (2016-17) designed and approved by Academic Council.
- Some sessions are also arranged by these faculties for self employment and entrepreneurship trainings, activities undertaken as Institutional social responsibilities etc.
- To cater the needs of such a large strength extra teaching faculty members are required.



- To enhance the skills of students some new vocational short term certificate courses have been started. For them invited lectures have been arranged.
- Visiting Professors/Invited Guest Experts are invited to give specific and additional information according to syllabi.
- For Career Counselling, Placement Activities, Sports activities etc. Resource persons are invited for specialised purposes.
- To make students familiar with various research activities such as methodology, preparation of projects, funds arrangements etc. Experts are invited.
- Experts from Industry /Employment giving sector are invited time to time to guide the students.
- To help and assist in all these tasks nonteaching assistants / helpers are also appointed.

#### **10. Institutional Development under RUSA and MPHEQIP (4 pages)**

Describes the college's activities over the past year under both schemes, discusses performance against strategic/institutional development plans and commitments over the previous year, identifying successes and key constraints; discusses how the college's institutional performance indicators under MPHEQIP are linked to its plans and commitments and presents data on the performance indicators in the format below; and outlines the college's plans and commitments under these schemes for the current year.

Indicator\*

Baseline Value

Target for [current Value as on 30th year] September [current year]

\* Institutional performance indicators contained in the PIP and in the MOU for MPHEQIP signed between the college and the DHE



#### 11. Placement Report (3 pages)

Describes the college's placement cell activities, placement rate and salary statistics, and lists major employers and sectors of employment (disaggregated by gender and course studied). Profiles successful alumni and identifies emerging placement trends.

#### Placement Cell:

Name of Student	Program graduated from	Company Name	Pay package at appointment
RUKSHAR ALI	BCOM	Ntellipaat Software Solutions Pvt. Ltd.	22000/-
KHUSHBOO BOHARE		Office of the Sub-Divisional Officer (Revenue) Section Mehgaon District Bhind Madhya Pradesh	22100/-
HARSHITA SONI	BALLB	MP HIGHT COURT	27700-44772
SWATI CHOUDHARY		Sharpanup	7000 to 10000/-
MAUSAM JAIN	BSC	District Basic Education Office, Lalitpur	9300-34800/-
NANDNI CHAVADIYA	BA	Abhinav Info Soft	8000
RAGINI DIXIT	BA	Abhinav Info Soft	8000
NEHA MAJHI	BA	Abhinav Info Soft	8000
MAHIMA TOMAR	BA	Abhinav Info Soft	8000
HEMLATA RAWAT	BA	Abhinav Info Soft	8000
JYOTI JATAV	BA	Abhinav Info Soft	8000
SUNAINA MISHRA	BCOM	Swargiya Shri Lal Ji Charitable Foundation	9000
AHUSHKA KUSHWAH	BCOM	Swargiya Shri Lal Ji Charitable Foundation	9000
PRIYANKA KUSHWAH	BCOM	Swargiya Shri Lal Ji Charitable Foundation	9000



**कार्यालय प्राचार्य, शासकीय कमलाराजा कन्या स्नातकोत्तर स्वशासी महाविद्यालय, ग्वालियर**  
**GOVT. KAMLA RAJA GIRLS P.G. AUTO. COLLEGE, GWALIOR (M.P.) INDIA**  
*(Affiliated to Jiwaji University, Gwalior under 2(f) & 12(b) NAAC – 'A' Grade Accredited Institute)*  
**www.krgcgwalior.org krgc@rediffmail.com Phone: 0751- 2625495, 0751-2438173**

SHUSHMITA MALL	BCOM	Swargiya Shri Lal Ji Charitable Foundation	9000
KARUNA PALAIYA	BCOM	Swargiya Shri Lal Ji Charitable Foundation	9000
KRISHNA SAHU	BCOM	Swargiya Shri Lal Ji Charitable Foundation	9000
Sakshi Sharma	BCOM	techie click innovations LLP.	8000
Komal Sharma	BCOM	techie click innovations LLP.	8000
Muskan Shivhare	BCOM	techie click innovations LLP.	8000
Neha Rathore	BCOM	techie click innovations LLP.	8000
Komal Khan	BCOM	techie click innovations LLP.	8000
Nupur Ghorpade	BCOM	techie click innovations LLP.	8000
JYOTI CHANDWANI	BCOM	Brij Raj Buildings & Developers	10,000/-
SUMAN RATHI	BCOM	Brij Raj Buildings & Developers	10,000/-
POOJA RAJAK	BCOM	Brij Raj Buildings & Developers	8000/-
NISHA KUSHWAH	BCOM	Brij Raj Buildings & Developers	8000/-
ANJALI KEN	MCOM	Sandesh Academy	12,000
JYOTI MISHRA	MCOM	Sandesh Academy	12,000
SHIVANI PARASHAR	MCOM	Sandesh Academy	12,000
PINKEY RATHORE	MCOM	Sandesh Academy	12,000
PRIYANKA KHATIK	MCOM	Sandesh Academy	12,000
SAPANA SHARMA	MCOM	Sandesh Academy	12,000
NISHA ALI	MCOM	Sandesh Academy	12,000
SATENDRI KUSHWAH	MCOM	Sandesh Academy	12,000
SADHNA	MCOM	Sandesh Academy	12,000



**कार्यालय प्राचार्य, शासकीय कमलाराजा कन्या स्नातकोत्तर स्वशासी महाविद्यालय, ग्वालियर**  
**GOVT. KAMLA RAJA GIRLS P.G. AUTO. COLLEGE, GWALIOR (M.P.) INDIA**  
*(Affiliated to Jiwaji University, Gwalior under 2(f) & 12(b) NAAC – 'A' Grade Accredited Institute)*  
**www.krgcgwalior.org krgc@rediffmail.com Phone: 0751- 2625495, 0751-2438173**

MAHORE			
PRIYANKA DEVI GHOSH	MSC BIOTECHNOLOGY	Sandesh Academy	12,000
SHAYANA KHAN	BCOM	Sandesh Academy	9,000
NEHA KHAN	BCOM	Sandesh Academy	9,000
ARTI MAHOUR	MA SOCIOLOGY	Sandesh Academy	10,000
PRIYANSHI DIXIT	MCOM	Sandesh Academy	10,000
RADHA PRAJAPATI	BCOM	Sainath Computers	10000/-
SUNAINA MISHRA	BCOM	Sainath Computers	10000/-
AHUSHKA KUSHWAH	BCOM	Sainath Computers	10000/-
PRIYANKA KUSHWAH	BCOM	Sainath Computers	10000/-
SHUSHMITA MALL	BCOM	Sainath Computers	10000/-
KARUNA PALAIYA	BCOM	Sainath Computers	10000/-
MAMALI AGRAWAL	BCOM	SAI COMPUTER	10000/-
SHIVANI GUPTA	BCOM	SAI COMPUTER	10000/-
PRIYA KUSHWAH	BCOM	SAI COMPUTER	10000/-
Muskan Agrawal	BBA	Dr. Radharaman Swarnkar SHikchha Prasar Samiti	10,000
Vinisha Matija	BBA	Dr. Radharaman Swarnkar SHikchha Prasar Samiti	10,000
Bhavana Shivhare	BBA	Dr. Radharaman Swarnkar SHikchha Prasar Samiti	10,000
Shikha Kushwah	BBA	Dr. Radharaman Swarnkar SHikchha Prasar Samiti	10,000
Rani Khan	BHSC	Dr. Radharaman Swarnkar SHikchha Prasar Samiti	10,000
Neha Prajapati	BHSC	Dr. Radharaman Swarnkar SHikchha Prasar Samiti	10,000
Pooja Rajput	BHSC	Dr. Radharaman Swarnkar	10,000



**कार्यालय प्राचार्य, शासकीय कमलाराजा कन्या स्नातकोत्तर स्वशासी महाविद्यालय, ग्वालियर**  
**GOVT. KAMLA RAJA GIRLS P.G. AUTO. COLLEGE, GWALIOR (M.P.) INDIA**  
*(Affiliated to Jiwaji University, Gwalior under 2(f) & 12(b) NAAC – 'A' Grade Accredited Institute)*  
**www.krgcgwalior.org krgc@rediffmail.com Phone: 0751- 2625495, 0751-2438173**

		SHikchha Prasar Samiti	
Abha Pathak	BHSC	Dr. Radharaman Swarnkar SHikchha Prasar Samiti	10,000
Kopal Agrawal	BHSC	Dr. Radharaman Swarnkar SHikchha Prasar Samiti	10,000
Muskan Rai	B.Com	Dr. Radharaman Swarnkar SHikchha Prasar Samiti	10,000
RADHA PRAJAPATI	BCOM	siddhi enterprises	12000
SUNAINA MISHRA	BCOM	siddhi enterprises	12000
AHUSHKA KUSHWAH	BCOM	siddhi enterprises	10000
PRIYANKA KUSHWAH	BCOM	siddhi enterprises	10000
SHUSHMITA MALL	BCOM	siddhi enterprises	12000
KARUNA PALAIYA	BCOM	siddhi enterprises	12000
Pooja Rajak	BCOM	Indrani Seva Samiti	4000
Nisha Kushwah	BCOM	Indrani Seva Samiti	4000
Niharika Laalchandrani	BCOM	Indrani Seva Samiti	4000
Pooja Shrivastava	BCOM	Indrani Seva Samiti	4000
Shivani Mahore	BCOM	Indrani Seva Samiti	4000
Sonal Prajapati	BCOM	Indrani Seva Samiti	4000



**कार्यालय प्राचार्य, शासकीय कमलाराजा कन्या स्नातकोत्तर स्वशासी महाविद्यालय, ग्वालियर**  
**GOVT. KAMLA RAJA GIRLS P.G. AUTO. COLLEGE, GWALIOR (M.P.) INDIA**  
*(Affiliated to Jiwaji University, Gwalior under 2(f) & 12(b) NAAC – 'A' Grade Accredited Institute)*  
**www.krgcgwalior.org krgc@rediffmail.com Phone: 0751- 2625495, 0751-2438173**

**Examination Cell:**

EXAMINATIONS DATE				
	Particulars		Dates	
Programme			From	To
PG	Main Examination	I & III Sem	06-12-2018	15-12-2018
		II & IV Sem	27-04-2019	30-05-2019
	Supplementary Examination	I & III Sem	06-12-2018	27-12-2018
		II & IV Sem	27-04-2019	30-05-2019
UG	Main Examination	Ist Year	15-04-2019	19-06-2019
		IInd Year	16-04-2019	14-06-2019
		I , III, V, VII, IX Sem	20-12-2018	03-06-2019
		II, IV, VI, VIII, X Sem	24-04-2019	03-06-2019
	Supplementary Examination	Ist Year	15-04-2019	19-06-2019
		IInd Year	16-04-2019	14-06-2019

RESULT DATE				
	Particulars		Dates	
Programe			From	To
PG	Main Examination	I & III Sem	17-12-2018	25-12-2018
		II & IV Sem	09-05-2019	11-06-2019
UG	Main Examination	I yr	11-02-2019	30/08/2019
		II yr	11-02-2019	30/08/2019
		I, III, V, VII, IX Sem	11-02-2019	05/07/2019
		II, IV, VI, VIII, XSem	11-02-2019	05/07/2019



Students Greivance (Retotaling/ Revaluation) (For Preceding Session 2018-19)		
Program		No Of Students Applied
UG	I Yr	77
	II Yr	20
	I Sem	11
	II Sem	05
	III Sem	08
	IV Sem	01
	V Sem	29
	VI Sem	30
PG	I& III Sem	Nil
	II & IV Sem	Nil

Result analysis
Result analysis was carried out and presented before the examination committee and principal for approval. Summary of the results during the session 2021-22 is as follows

Result analysis -PG				
I SEM				
Sr NO	SUB	Appeared	Passed	Pass %
	Urdu Lit.	05	05	100
	Eng. Lit	43	32	74.42
	Hindi Lit.	47	32	68.09
	Sanskrit Lit.	29	23	79.31
	Pol. Sc.	39	28	71.79
	Sociology	43	26	60.47
	History	46	39	84.78
	Economics	31	17	54.84
	Geography	23	20	86.96
	Philosophy	01	01	100





**कार्यालय प्राचार्य, शासकीय कमलाराजा कन्या स्नातकोत्तर स्वशासी महाविद्यालय, ग्वालियर**  
**GOVT. KAMLA RAJA GIRLS P.G. AUTO. COLLEGE, GWALIOR (M.P.) INDIA**  
 (Affiliated to Jiwaji University, Gwalior under 2(f) & 12(b) NAAC – 'A' Grade Accredited Institute)  
[www.krgcgwalior.org](http://www.krgcgwalior.org) [krgc@rediffmail.com](mailto:krgc@rediffmail.com) Phone: 0751- 2625495, 0751-2438173

Draw. & Pain.	04	02	50
Music (Vocal)	10	08	80
Music (Instrument)	01	01	100
M.Com	453	402	88.74
M.H.Sc (F & N)	11	11	100
M.H.Sc (H & D)	-	-	-
M.H.Sc (R & M)	03	03	100
Mathematics	51	38	74.51
Physics	33	20	60.61
Chemistry	32	17	53.12
Botany	43	21	48.84
Zoology	45	24	53.33
Biotechnology	24	22	91.67

Result analysis -PG				
II SEM				
Sr NO	SUB	Appeared	Passed	Pass %
	Urdu Lit.	05	05	100
	Eng. Lit	36	36	100
	Hindi Lit.	37	37	100
	Sanskrit Lit.	24	24	100
	Pol. Sc.	35	33	94.29
	Sociology	37	35	94.29
	History	47	47	100
	Economics	18	17	94.44
	Geography	20	20	100
	Philosophy	-	-	-
	Draw. & Pain.	04	02	50
	Music (Vocal)	08	07	87.50
	Music	01	01	100



(Instrument)			
M.Com	435	414	95.17
M.H.Sc (F & N)	12	12	100
M.H.Sc (H & D)	-	-	-
M.H.Sc (R & M)	04	04	100
Mathematics	46	44	95.65
Physics	22	21	95.45
Chemistry	16	14	97.50
Botany	28	25	89.29
Zoology	20	18	90
Biotechnology	22	21	95.45

Result analysis -PG				
III SEM				
Sr NO	SUB	Appeared	Passed	Pass %
	Urdu Lit.	08	08	100
	Eng. Lit	33	27	81.82
	Hindi Lit.	32	29	90.62
	Sanskrit Lit.	19	18	94.74
	Pol. Sc.	33	26	78.79
	Sociology	36	35	97.22
	History	35	33	94.29
	Economics	16	11	68.75
	Geography	11	11	100
	Philosophy	05	05	100
	Draw. & Pain.	07	06	85.71
	Music (Vocal)	07	06	85.71
	Music (Instrument)	02	02	100
	M.Com	379	243	93.14
	M.H.Sc (F & N)	06	05	83.33



M.H.Sc (H & D)	01	01	100
M.H.Sc (R & M)	01	01	100
Mathematics	38	38	100
Physics	31	30	96.77
Chemistry	17	17	100
Botany	18	16	88.89
Zoology	24	22	91.67
Biotechnology	06	05	83.33

Result analysis -PG				
IV SEM				
Sr NO	SUB	Appeared	Passed	Pass %
	Urdu Lit.	08	08	100
	Eng. Lit	28	26	92.86
	Hindi Lit.	31	28	90.32
	Sanskrit Lit.	20	18	90.00
	Pol. Sc.	27	25	81.48
	Sociology	35	26	74.29
	History	33	24	72.73
	Economics	13	11	84.62
	Geography	11	11	100
	Philosophy	-	-	-
	Draw. & Pain.	05	07	71.43
	Music (Vocal)	07	06	85.71
	Music (Instrument)	02	02	100
	M.Com	362	334	92.27
	M.H.Sc (F & N)	06	04	66.67
	M.H.Sc (H & D)	01	01	100
	M.H.Sc (R & M)	01	01	100
	Mathematics	38	37	97.37



Physics	31	29	93.55
Chemistry	17	15	88.24
Botany	19	17	89.47
Zoology	24	22	91.67
Biotechnology	05	05	100

Result analysis -UG				
I YEAR				
Sr NO	SUB	Appered	Passed	Pass %
	BA	1252	1140	91.06
	BSc(Bio)	448	259	57.81
	BSc(Math)	412	318	77.18
	B.COM	1246	1142	91.65
	B. H. Sc.	13	11	84.62

Result analysis -UG				
II YEAR				
Sr NO	SUB	Appered	Passed	Pass %
	BA	806	780	96.77
	BSc(Bio)	239	232	97.07
	BSc(Math)	314	286	81.08
	B.COM	1185	1131	95.44
	B. H. Sc.	28	26	92.86

Result analysis -UG				
I SEM				
Sr NO	SUB	Appered	Passed	Pass %
	B.C.A	31	12	38.71
	B.B.A.	31	12	38.71
	B.A. LLB	65	54	83.08



Result analysis -UG				
II SEM				
Sr NO	SUB	Appered	Passed	Pass %
	B.C.A	24	23	95.83
	B.B.A.	52	51	98.08
	B.A. LLB	59	53	89.83

Result analysis -UG				
III SEM				
Sr NO	SUB	Appered	Passed	Pass %
	B.C.A	39	37	94.87
	B.B.A.	39	37	94.87
	B.A. LLB	25	24	96.00

Result analysis -UG				
IV SEM				
Sr NO	SUB	Appered	Passed	Pass %
	B.C.A	40	40	100
	B.B.A.	35	35	100
	B.A. LLB	24	24	100

Result analysis -UG				
V SEM				
Sr NO	SUB	Appered	Passed	Pass %
	BA	659	637	96.66
	BSc(Bio)	279	264	94.62
	BSc(Math)	368	351	95.38
	B.COM	1321	1284	97.20
	B. H. Sc.	17	17	100
	B.C.A	37	33	89.19



	B.B.A.	37	33	89.19
	B.A. LLB	30	30	100

Result analysis -UG				
VI SEM				
Sr NO	SUB	Appered	Passed	Pass %
	BA	648	616	95.06
	BSc(Bio)	268	254	94.78
	BSc(Math)	352	349	99.15
	B.COM	1298	1240	95.05
	B. H. Sc.	17	16	94.12
	B.C.A	35	35	100
	B.B.A.	52	51	98.08
	B.A. LLB	30	30	100

Result analysis -UG				
VII SEM				
Sr NO	SUB	Appered	Passed	Pass %
	B.A. LLB	29	29	100

Result analysis -UG				
VIII SEM				
Sr NO	SUB	Appered	Passed	Pass %
	B.A. LLB	29	29	100

Result analysis -UG				
IX SEM				
Sr NO	SUB	Appered	Passed	Pass %
	B.A. LLB	26	26	100

Result analysis -UG				
---------------------	--	--	--	--



X SEM				
Sr NO	SUB	Appered	Passed	Pass %
	B.A. LLB	26	26	100

**Ph.D Awarded:**

Name of the college	
7. PhDs Awarded	
Number of PhDs awarded between 1 <sup>st</sup> July 2018 to 30 <sup>th</sup> June 2019	
Discipline Group	Number
Botany	0
Chemistry	0
Commerce	3
Drawing & Painting	0
Economics	0
English	5
Geography	1
Hindi	4
History	3



कार्यालय प्राचार्य, शासकीय कमलाराजा कन्या स्नातकोत्तर स्वशासी महाविद्यालय, ग्वालियर  
**GOVT. KAMLA RAJA GIRLS P.G. AUTO. COLLEGE, GWALIOR (M.P.) INDIA**  
(Affiliated to Jiwaji University, Gwalior under 2(f) & 12(b) NAAC – 'A' Grade Accredited Institute)  
[www.krgcgwalior.org](http://www.krgcgwalior.org) [krgc@rediffmail.com](mailto:krgc@rediffmail.com) Phone: 0751- 2625495, 0751-2438173

Home Science	6
Mathematics	1
Music	1
Physics	0
Political Science	1
Psychology	1
Sanskrit	2
Sociology	4
Zoology	0
<b>All disciplines</b>	<b>32</b>





Name of the college		
<b>8. Research and consultancy</b>		
Revenue generated through externally funded research and consultancies over  01 <sup>st</sup> July 2018 to 30 <sup>th</sup> August 2019		
<b>Discipline Group</b>	<b>Number of active projects</b>	<b>Total Revenue Generated (Rs. lakhs)</b>
Drawing and Painting	1	125000/-
Hindi	1	192500

<b>(a)Hostel occupancy as on 01<sup>st</sup> July 2018 to 30<sup>th</sup> June 2019</b>		
<b>Capacity : 172</b>		<b>Number of residents</b>
<b>Males: Nil</b>		
<b>Females:</b>		
<b>SC</b>	<b>Male</b>	<b>Nil</b>
	<b>Female</b>	<b>26</b>



ST	Male	Nil
	Female	2
General	Male	Nil
	Female	101
Total	Male	Nil
	Female	129

#### Paper Published in Journals

Number of papers published in peer-reviewed journals between 1 <sup>st</sup> July 2018 to 31 <sup>st</sup> June 2019			
Discipline Group	Number of papers published		Number of published papers through cross-institute research collaboration
	International Journals	National Journals	
Botany	02	01	



**कार्यालय प्राचार्य, शासकीय कमलाराजा कन्या स्नातकोत्तर स्वशासी महाविद्यालय, ग्वालियर**  
**GOVT. KAMLA RAJA GIRLS P.G. AUTO. COLLEGE, GWALIOR (M.P.) INDIA**  
(Affiliated to Jiwaji University, Gwalior under 2(f) & 12(b) NAAC – 'A' Grade Accredited Institute)  
[www.krgcgwalior.org](http://www.krgcgwalior.org) [krgc@rediffmail.com](mailto:krgc@rediffmail.com) Phone: 0751- 2625495, 0751-2438173

Zoology	00	01	
Chemistry	02	02	
Physics	02	01	
Mathematics	03	00	
Computer Science	00	00	
Biotechnology	00	03	
Home Science	04	04	
Commerce	03	02	
Hindi	00	06	
English	05	06	
Urdu	02	00	
Sanskrit	01	04	
Philosophy	00	00	
Psychology	00	04	
History	00	08	
Sociology	03	01	
Political Sc.	00	00	



कार्यालय प्राचार्य, शासकीय कमलाराजा कन्या स्नातकोत्तर स्वशासी महाविद्यालय, ग्वालियर  
**GOVT. KAMLA RAJA GIRLS P.G. AUTO. COLLEGE, GWALIOR (M.P.) INDIA**

(Affiliated to Jiwaji University, Gwalior under 2(f) & 12(b) NAAC – 'A' Grade Accredited Institute)

[www.krgcgwalior.org](http://www.krgcgwalior.org) [krgc@rediffmail.com](mailto:krgc@rediffmail.com) Phone: 0751- 2625495, 0751-2438173

Economics	00	00	
Geography	02	05	
Music	01	00	
Draw. & Paint.	00	02	
Law	00	00	
All disciplines	30	46	